

## VILLA 2 TOP VIEW

Plot surface 1.500,26 sqm

Basement 170,94 sqm Ground Floor  
196,24 sqm First Floor 158,87 sqm

Total Interior/Construido 526,05 sqm

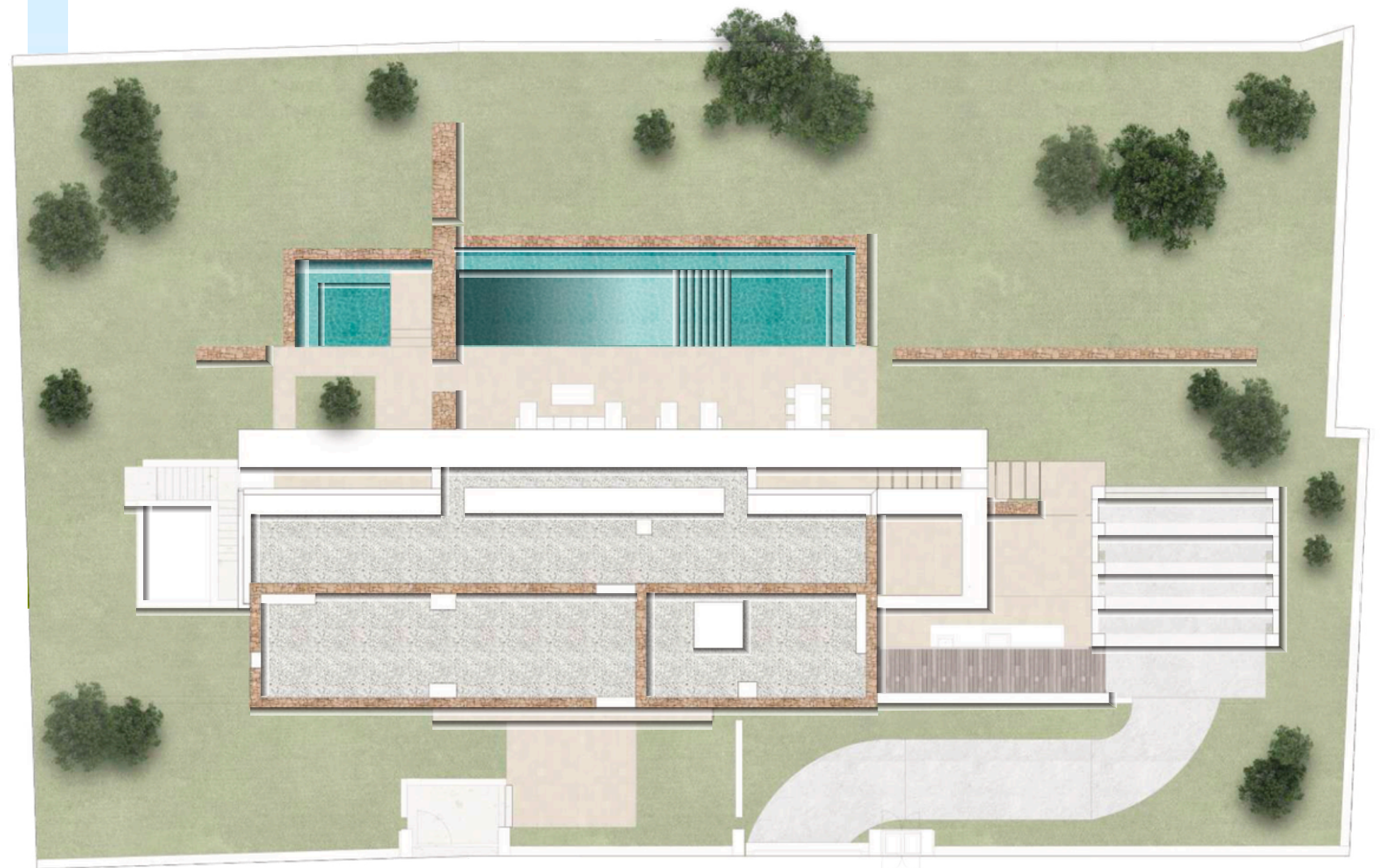
Total Usable/Útil 415,07sqm

Covered Terrace 56,25 sqm

Uncovered Terrace 121,82 sqm

Total Exterior 178,07 sqm

**Total Interior&  
Exterior 704,12 sqm**



**Project developed by:  
CORALLISA 2019 PRIME DEVELOPMENT**

The floor plan above is not final as it has been designed in accordance with the Building Execution Project and, consequently, CORALLISA 2019 PRIME DEVELOPMENT reserves the right to include whatever changes due to technical and/or legal imperatives required by any public Administration or Agency. These changes, in any case, will be in accordance with the progress of the construction work. The accessory elements (for example, including the kitchen) are merely for illustrative purposes. The rotation sense of doors and the distribution of sanitary fittings are not binding. The surface areas shown are approximate and, may be altered for technical and/or legal reasons in the course of the construction work.



## VILLA 2 GROUND FLOOR

Plot surface 1.500,26 sqm

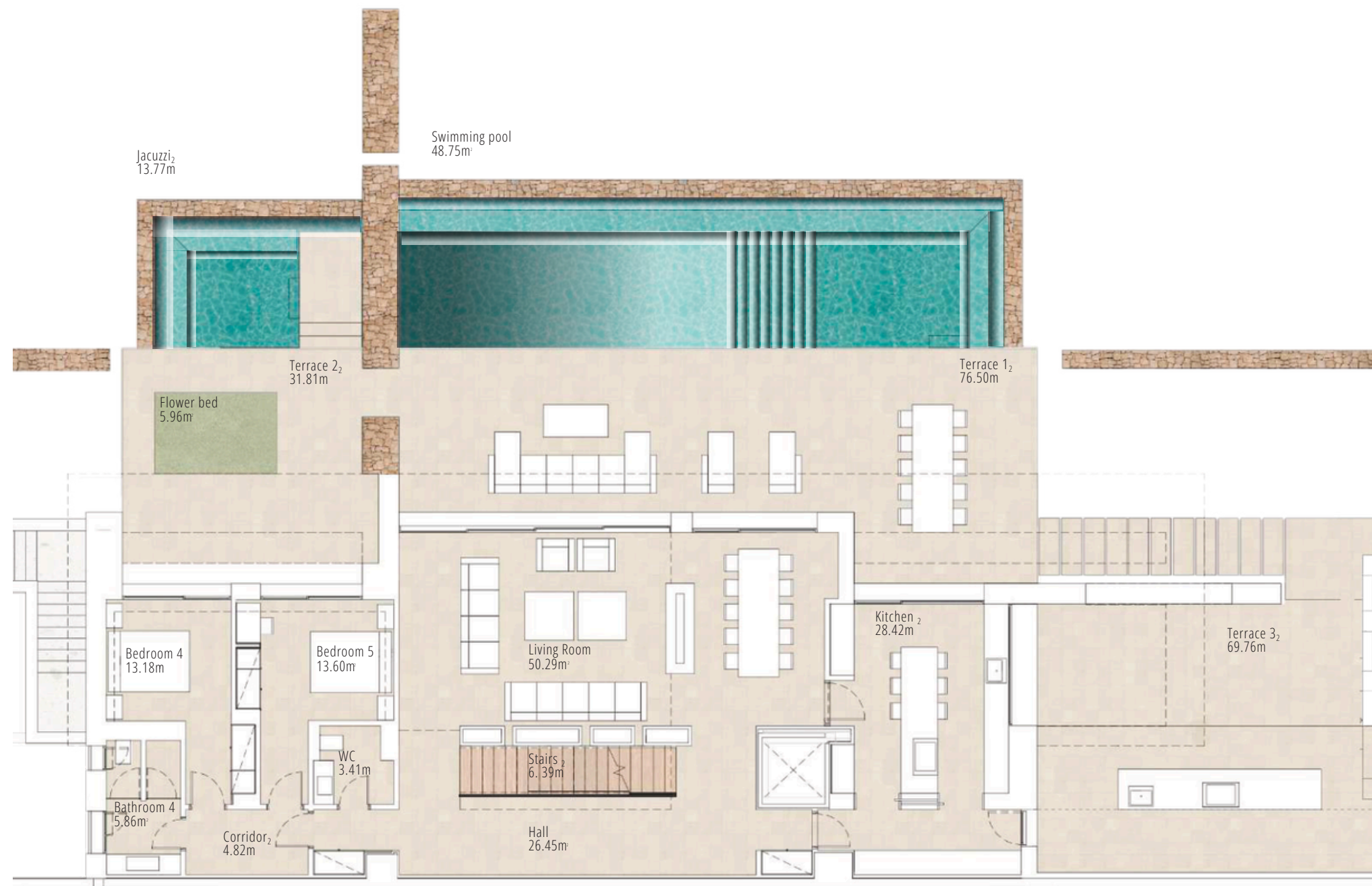
Basement 170,94 sqm Ground Floor  
196,24 sqm First Floor 158,87 sqm

Total Interior/Construido 526,05 sqm

Total Usable/Útil 415,07sqm

Covered Terrace 56,25 sqm  
Uncovered Terrace 121,82 sqm  
Total Exterior 178,07 sqm

**Total Interior&  
Exterior 704,12 sqm**



**Project developed by:  
CORALLISA 2019 PRIME DEVELOPMENT**

The floor plan above is not final as it has been designed in accordance with the Building Execution Project and, consequently, CORALLISA 2019 PRIME DEVELOPMENT reserves the right to include whatever changes due to technical and/or legal imperatives required by any public Administration or Agency. These changes, in any case, will be in accordance with the progress of the construction work. The accessory elements (for example, including the kitchen) are merely for illustrative purposes. The rotation sense of doors and the distribution of sanitary fittings are not binding. The surface areas shown are approximate and, may be altered for technical and/or legal reasons in the course of the construction work.



## VILLA 2 FIRST FLOOR

Plot surface 1.500,26 sqm

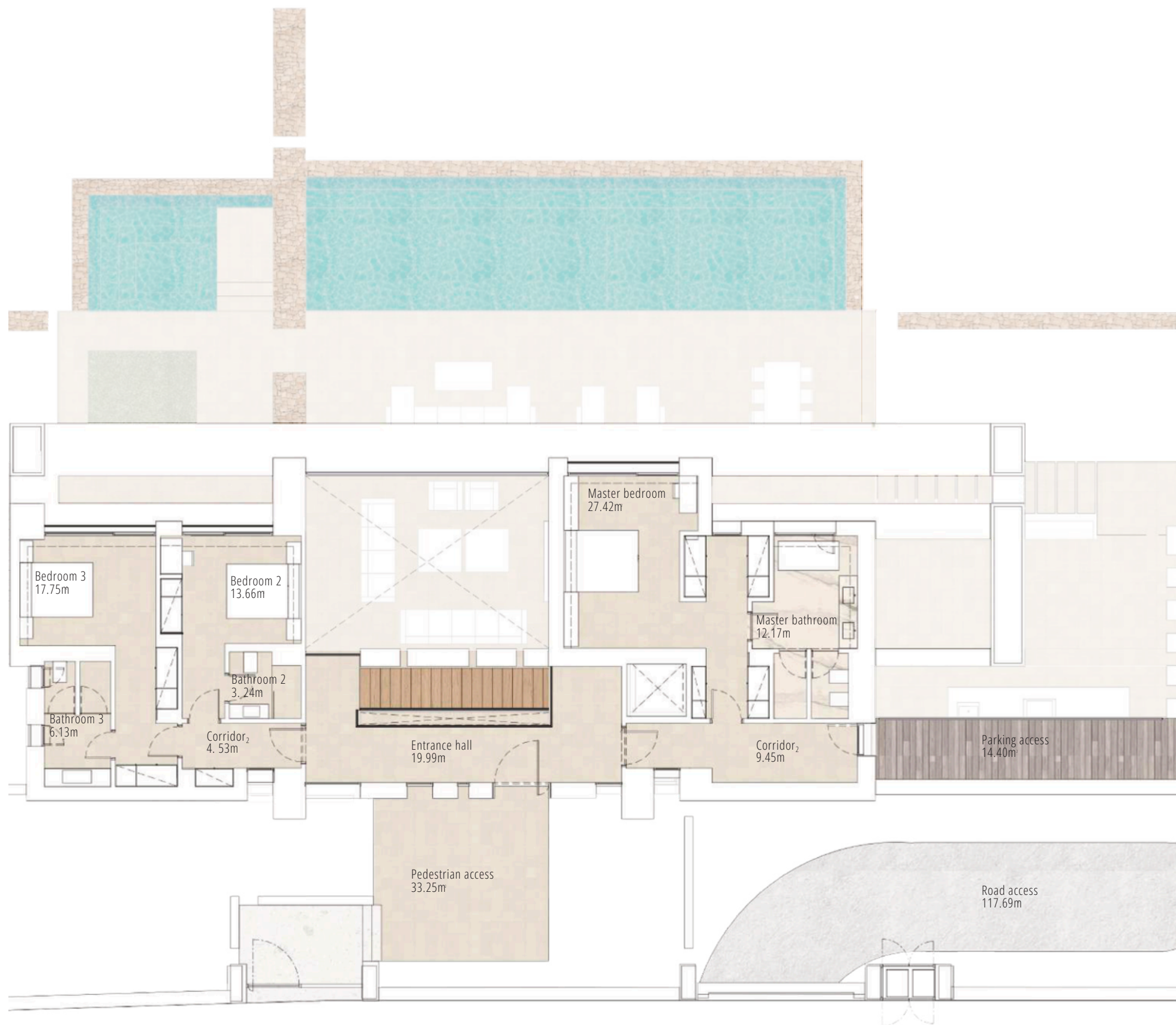
Basement 170,94 sqm Ground Floor  
196,24 sqm First Floor 158,87 sqm

Total Interior/Construido 526,05 sqm

Total Usable/Útil 415,07sqm

Covered Terrace 56,25 sqm  
Uncovered Terrace 121,82 sqm  
Total Exterior 178,07 sqm

**Total Interior&  
Exterior 704,12 sqm**



**Project developed by:  
CORALLISA 2019 PRIME DEVELOPMENT**

The floor plan above is not final as it has been designed in accordance with the Building Execution Project and, consequently, CORALLISA 2019 PRIME DEVELOPMENT reserves the right to include whatever changes due to technical and/or legal imperatives required by any public Administration or Agency. These changes, in any case, will be in accordance with the progress of the construction work. The accessory elements (for example, including the kitchen) are merely for illustrative purposes. The rotation sense of doors and the distribution of sanitary fittings are not binding. The surface areas shown are approximate and, may be altered for technical and/or legal reasons in the course of the construction work.



## VILLA 2 BASEMENT

Plot surface 1.500,26 sqm

Basement 170,94 sqm Ground Floor

196,24 sqm First Floor 158,87 sqm

Total Interior/Construido 526,05 sqm

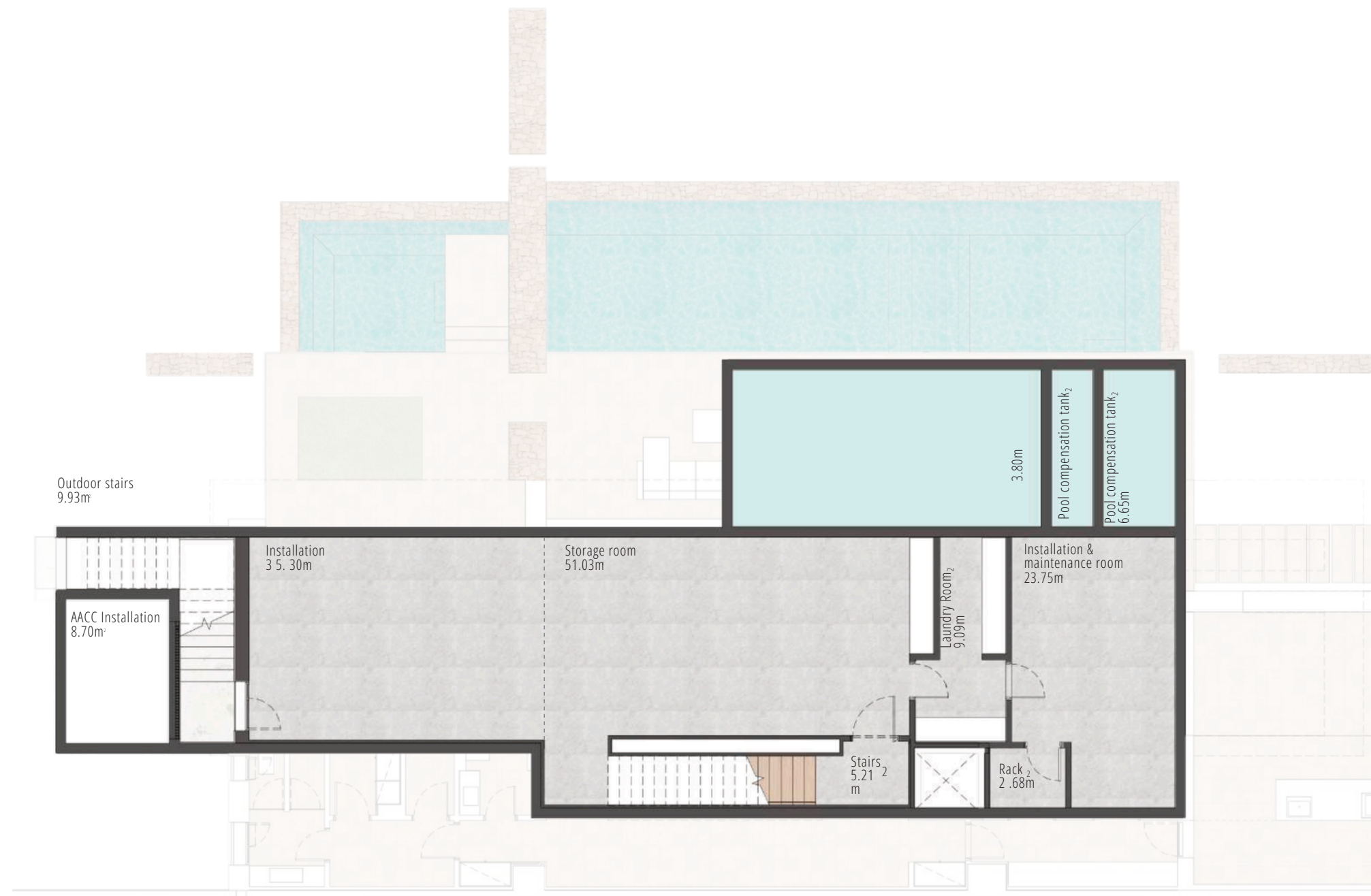
Total Usable/Útil 415,07sqm

Covered Terrace 56,25 sqm

Uncovered Terrace 121,82 sqm

Total Exterior 178,07 sqm

**Total Interior&  
Exterior 704,12 sqm**



**Project developed by:  
CORALLISA 2019 PRIME DEVELOPMENT**

The floor plan above is not final as it has been designed in accordance with the Building Execution Project and, consequently, CORALLISA 2019 PRIME DEVELOPMENT reserves the right to include whatever changes due to technical and/or legal imperatives required by any public Administration or Agency. These changes, in any case, will be in accordance with the progress of the construction work. The accessory elements (for example, including the kitchen) are merely for illustrative purposes. The rotation sense of doors and the distribution of sanitary fittings are not binding. The surface areas shown are approximate and, may be altered for technical and/or legal reasons in the course of the construction work.



## VILLA 2 ELEVATION

Plot surface 1.500,26 sqm

Basement 170,94 sqm

Ground Floor 196,24 sqm

First Floor 158,87 sqm

Total Interior/Construido 526,05 sqm

Total Usable/Útil 415,07sqm

Covered Terrace 56,25 sqm

Uncovered Terrace 121,82 sqm

Total Exterior 178,07 sqm

**Total Interior&  
Exterior 704,12 sqm**



### Project developed by: CORALLISA 2019 PRIME DEVELOPMENT

The floor plan above is not final as it has been designed in accordance with the Building Execution Project and, consequently, CORALLISA 2019 PRIME DEVELOPMENT reserves the right to include whatever changes due to technical and/or legal imperatives required by any public Administration or Agency. These changes, in any case, will be in accordance with the progress of the construction work. The accessory elements (for example, including the kitchen) are merely for illustrative purposes. The rotation sense of doors and the distribution of sanitary fittings are not binding. The surface areas shown are approximate and, may be altered for technical and/or legal reasons in the course of the construction work.

