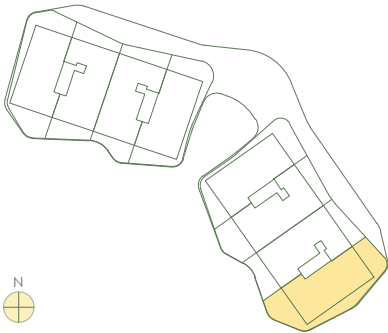


East - 1 1 1

FIRST FLOOR



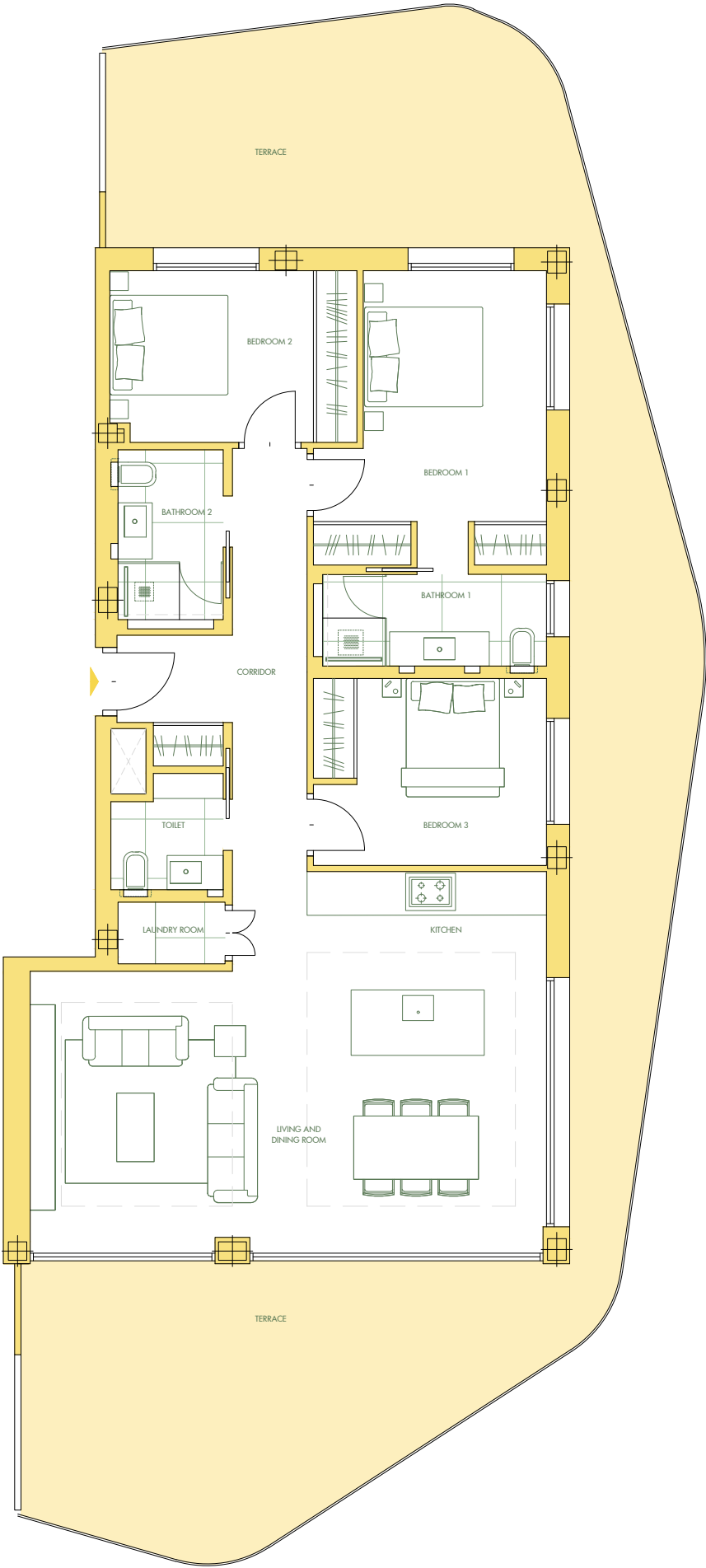
BEDROOMS	3
BATHROOMS	2
GUEST BATHROOMS	1
GROSS LIVING AREA	
129,76 m²	
TOTAL TERRACE	
84,38 m²	
COVERED TERRACE	
62,22 m²	
UNCOVERED TERRACE	
22,16 m²	
GARAGE SPACES	
9-10	
EXTERNAL STORAGE ROOM	
14,00 m²	

INSIDE NET LIVING AREA

LIVING AND DINING ROOM	32,17 m²
CORRIDOR	13,45 m²
KITCHEN	11,34 m²
LAUNDRY ROOM	1,70 m²
BEDROOM 1	15,30 m²
BEDROOM 2	10,83 m²
BEDROOM 3	11,16 m²
BATHROOM 1	5,28 m²
BATHROOM 2	4,49 m²
TOILET	3,05 m²

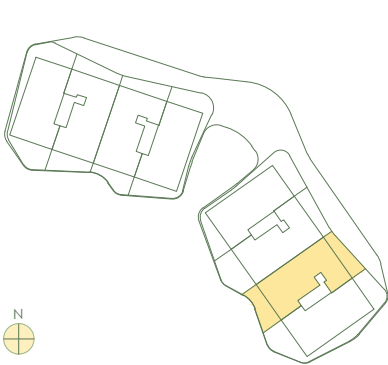
NET LIVING AREA 108,87 m²

This document is for information purposes only and may be subject to change due to the technical requirements of the project. All furniture, including that in the kitchen, is merely indicative; door swings and the distribution of sanitary appliances are not binding. The surfaces indicated are approximate and may be subject to change for technical reasons during the execution of the project.



East - 1 1 2

FIRST FLOOR



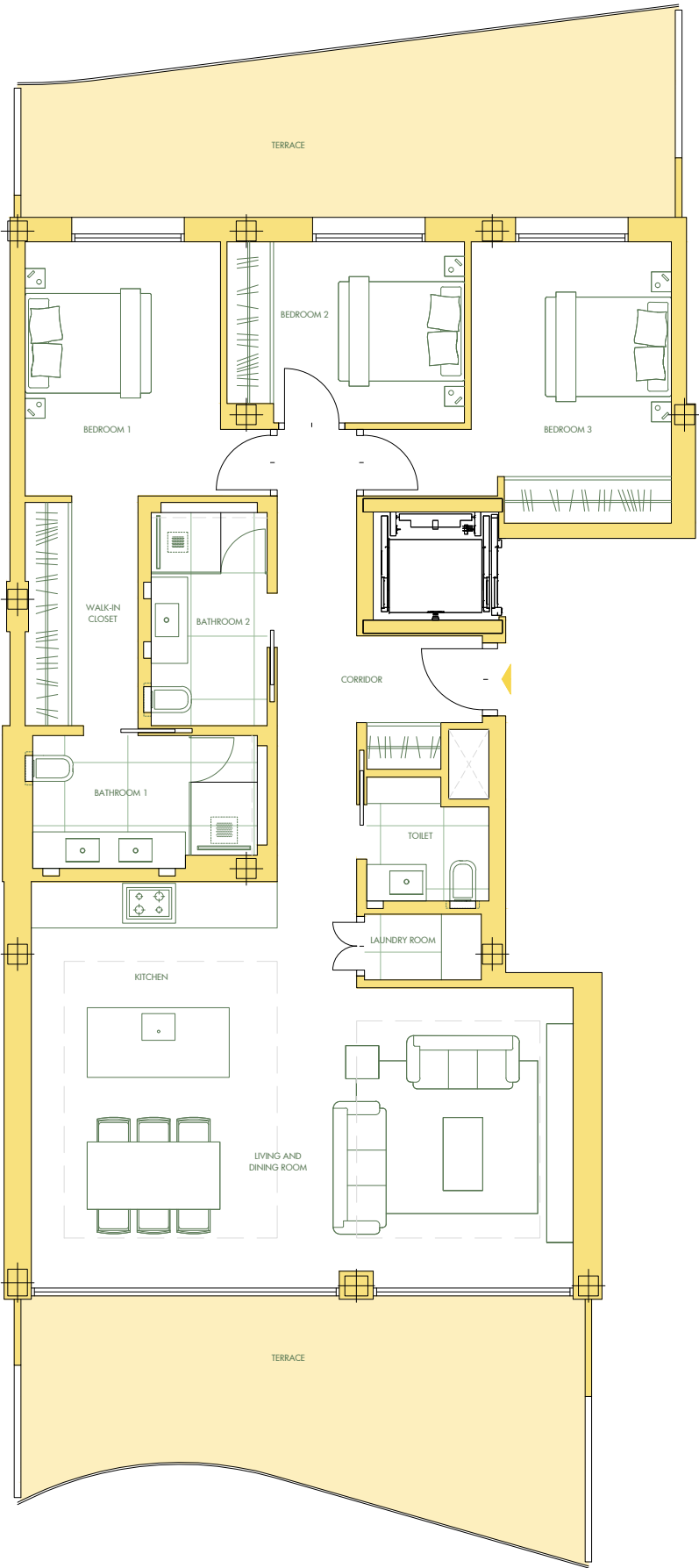
- BEDROOMS **3**
- BATHROOMS **2**
- GUEST BATHROOMS **1**

GROSS LIVING AREA	<b>135,69 m²</b>
TOTAL TERRACE	<b>51,34 m²</b>
COVERED TERRACE	<b>45,19 m²</b>
UNCOVERED TERRACE	<b>6,15 m²</b>
GARAGE SPACES	<b>21-22</b>
EXTERNAL STORAGE ROOM	<b>13,40 m²</b>

INSIDE NET LIVING AREA

LIVING AND DINING ROOM	31,87 m²
CORRIDOR	13,37 m²
KITCHEN	10,96 m²
LAUNDRY ROOM	1,74 m²
BEDROOM 1	12,03 m²
WALK-IN CLOSET	5,78 m²
BEDROOM 2	9,57 m²
BEDROOM 3	14,19 m²
BATHROOM 1	6,55 m²
BATHROOM 2	5,63 m²
TOILET	3,12 m²

NET LIVING AREA **114,81 m²**

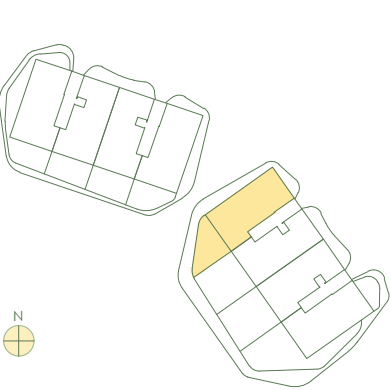


This document is for information purposes only and may be subject to change due to the technical requirements of the project. All furniture, including that in the kitchen, is merely indicative; door swings and the distribution of sanitary appliances are not binding. The surfaces indicated are approximate and may be subject to change for technical reasons during the execution of the project.



East - 202

GROUND FLOOR



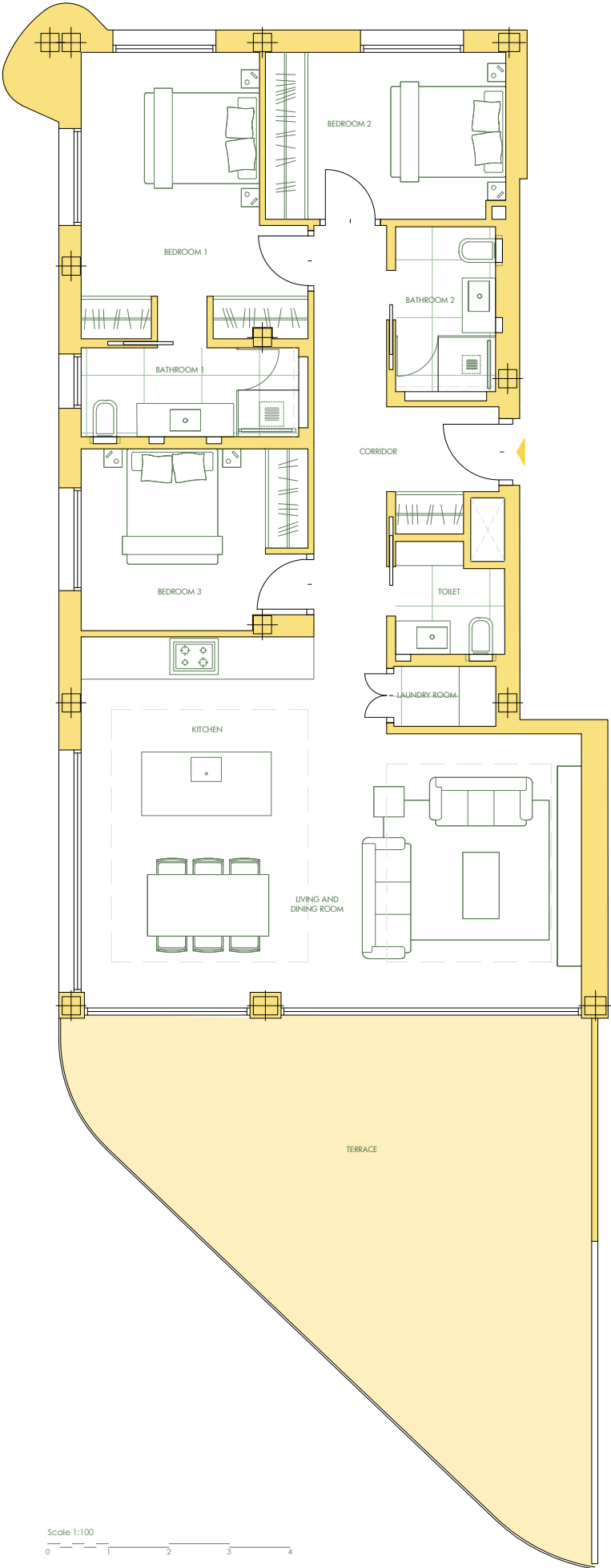
BEDROOMS	3
BATHROOMS	2
GUEST BATHROOMS	1
GROSS LIVING AREA	
129,76 m²	
TOTAL TERRACE	
48,88 m²	
COVERED TERRACE	
26,30 m²	
UNCOVERED TERRACE	
22,58 m²	
GARAGE SPACES	
7-8	
EXTERNAL STORAGE ROOM	
16,52 m²	

INSIDE NET LIVING AREA

LIVING AND DINING ROOM	32,07 m²
CORRIDOR	13,45 m²
KITCHEN	11,34 m²
LAUNDRY ROOM	1,67 m²
BEDROOM 1	15,24 m²
BEDROOM 2	10,84 m²
BEDROOM 3	10,90 m²
BATHROOM 1	5,28 m²
BATHROOM 2	4,49 m²
TOILET	3,05 m²

NET LIVING AREA 108,33 m²

This document is for information purposes only and may be subject to change due to the technical requirements of the project. All furniture, including that in the kitchen, is merely indicative; door swings and the distribution of sanitary appliances are not binding. The surfaces indicated are approximate and may be subject to change for technical reasons during the execution of the project.



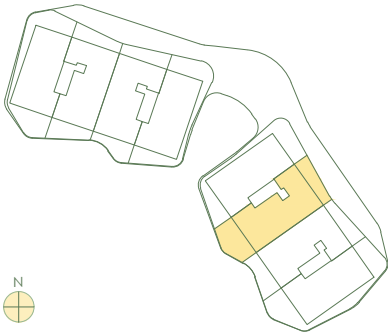
Scale 1:100

0 1 2 3 4



East - 211

FIRST FLOOR



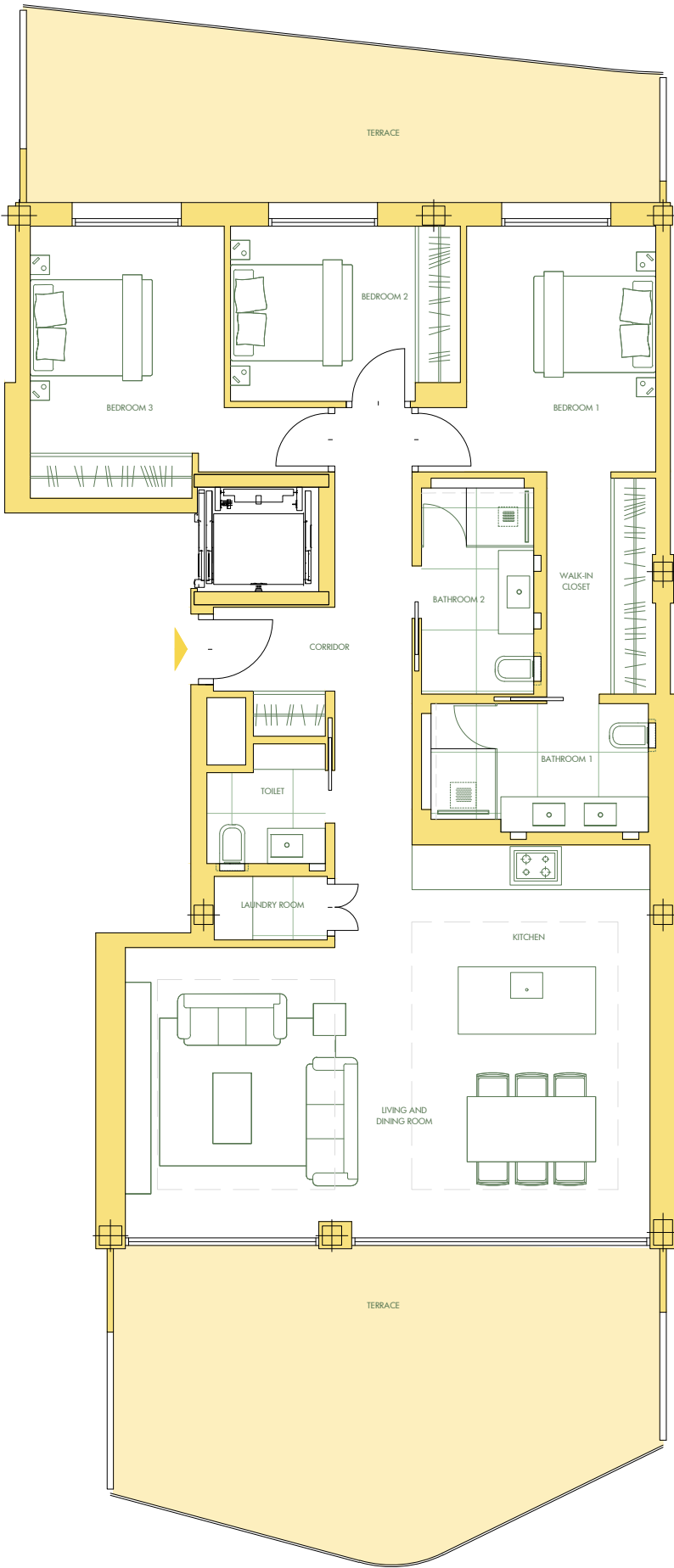
BEDROOMS	3
BATHROOMS	2
GUEST BATHROOMS	1
GROSS LIVING AREA	
135,69 m²	
TOTAL TERRACE	
61,55 m²	
COVERED TERRACE	
58,25 m²	
UNCOVERED TERRACE	
3,30 m²	
GARAGE SPACES	
11-12	
EXTERNAL STORAGE ROOM	
13,14 m²	

INSIDE NET LIVING AREA

LIVING AND DINING ROOM	31,87 m²
CORRIDOR	13,37 m²
KITCHEN	10,96 m²
LAUNDRY ROOM	1,74 m²
BEDROOM 1	12,03 m²
WALK-IN CLOSET	5,78 m²
BEDROOM 2	9,57 m²
BEDROOM 3	14,19 m²
BATHROOM 1	6,55 m²
BATHROOM 2	5,63 m²
TOILET	3,12 m²

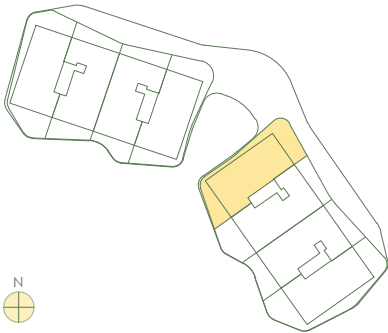
NET LIVING AREA 114,81 m²

This document is for information purposes only and may be subject to change due to the technical requirements of the project. All furniture, including that in the kitchen, is merely indicative; door swings and the distribution of sanitary appliances are not binding. The surfaces indicated are approximate and may be subject to change for technical reasons during the execution of the project.



East - 2 1 2

FIRST FLOOR

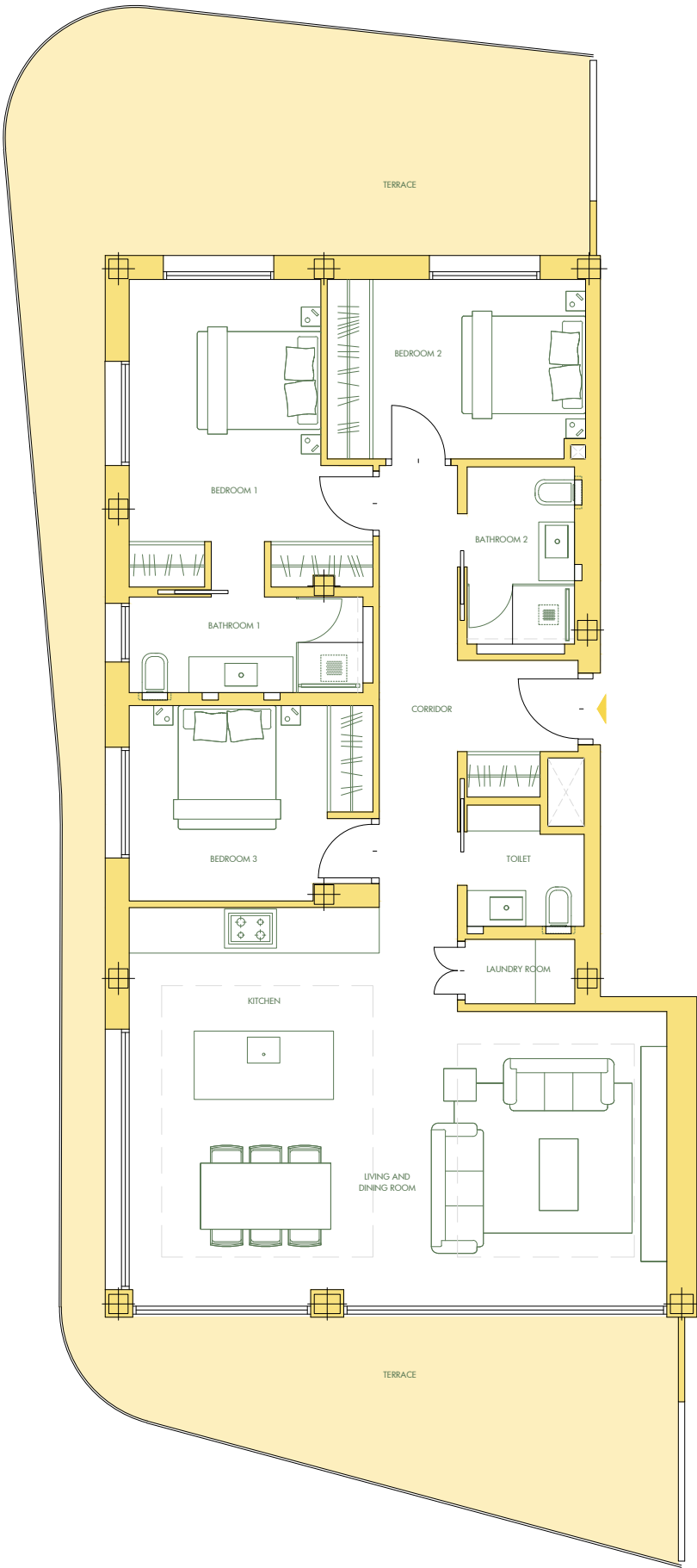


BEDROOMS	3
BATHROOMS	2
GUEST BATHROOMS	1
GROSS LIVING AREA	
129,76 m²	
TOTAL TERRACE	
68,33 m²	
COVERED TERRACE	
59,26 m²	
UNCOVERED TERRACE	
9,07 m²	
GARAGE SPACES	
37-38	
EXTERNAL STORAGE ROOM	
13,79 m²	

INSIDE NET LIVING AREA

LIVING AND DINING ROOM	32,07 m²
CORRIDOR	13,45 m²
KITCHEN	11,34 m²
LAUNDRY ROOM	1,67 m²
BEDROOM 1	15,24 m²
BEDROOM 2	10,84 m²
BEDROOM 3	10,90 m²
BATHROOM 1	5,28 m²
BATHROOM 2	4,49 m²
TOILET	3,05 m²

NET LIVING AREA 108,33 m²

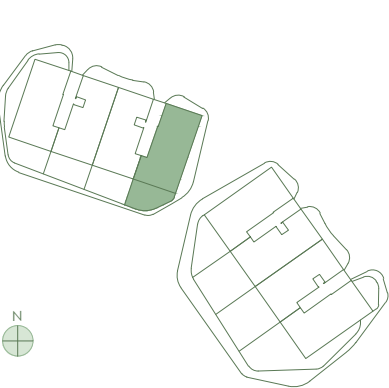


This document is for information purposes only and may be subject to change due to the technical requirements of the project. All furniture, including that in the kitchen, is merely indicative; door swings and the distribution of sanitary appliances are not binding. The surfaces indicated are approximate and may be subject to change for technical reasons during the execution of the project.



West - 3 0 1

GROUND FLOOR



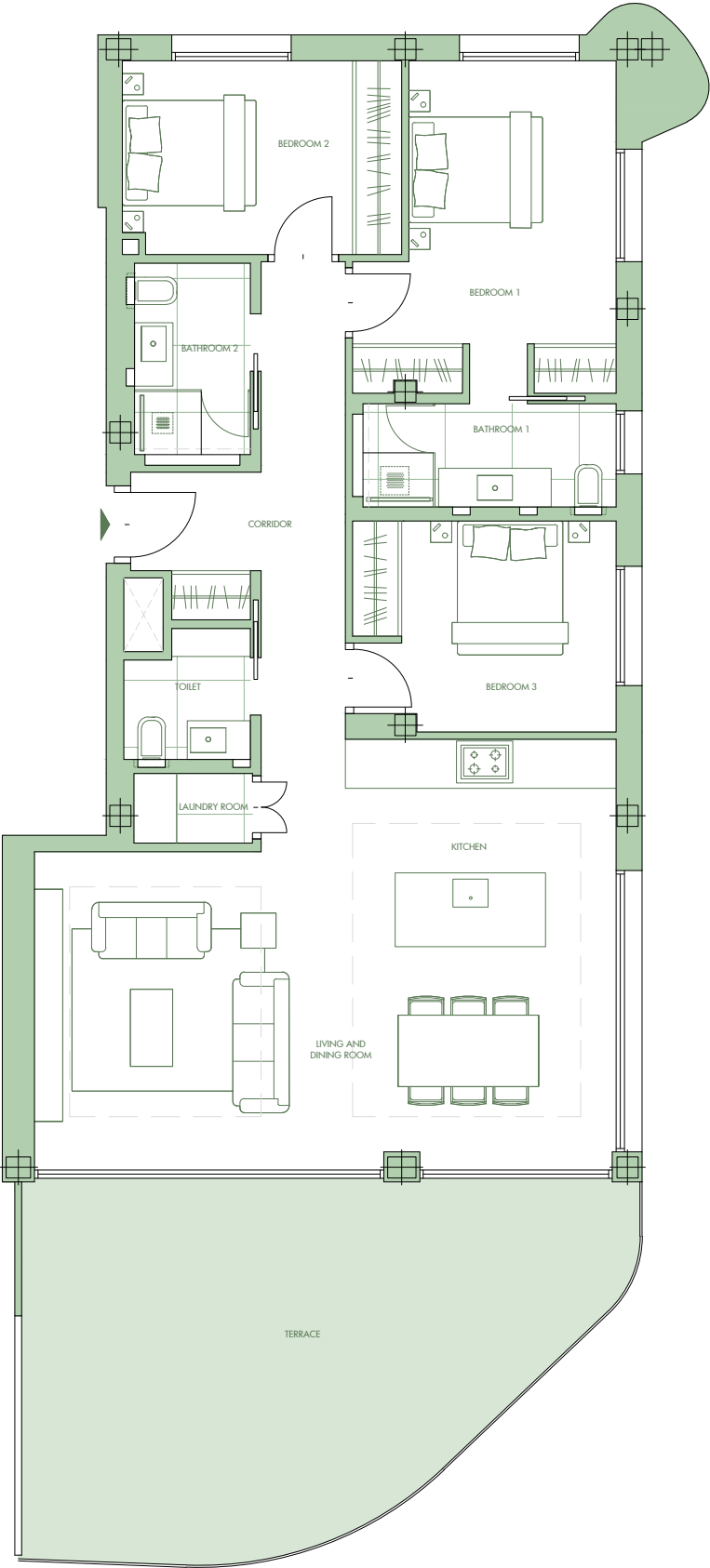
- BEDROOMS **3**
- BATHROOMS **2**
- GUEST BATHROOMS **1**

GROSS LIVING AREA	<b>129,76 m²</b>
TOTAL TERRACE	<b>38,93 m²</b>
COVERED TERRACE	<b>24,44 m²</b>
UNCOVERED TERRACE	<b>14,49 m²</b>
GARAGE SPACES	<b>35-36</b>
EXTERNAL STORAGE ROOM	<b>12,91 m²</b>

INSIDE NET LIVING AREA

LIVING AND DINING ROOM	32,07 m²
CORRIDOR	13,45 m²
KITCHEN	11,34 m²
LAUNDRY ROOM	1,67 m²
BEDROOM 1	15,24 m²
BEDROOM 2	10,84 m²
BEDROOM 3	10,90 m²
BATHROOM 1	5,28 m²
BATHROOM 2	4,49 m²
TOILET	3,05 m²

NET LIVING AREA **108,33 m²**

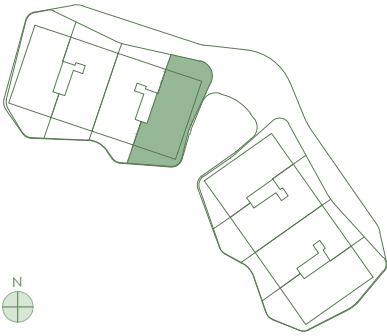


This document is for information purposes only and may be subject to change due to the technical requirements of the project. All furniture, including that in the kitchen, is merely indicative; door swings and the distribution of sanitary appliances are not binding. The surfaces indicated are approximate and may be subject to change for technical reasons during the execution of the project.



West - 3 1 1

FIRST FLOOR

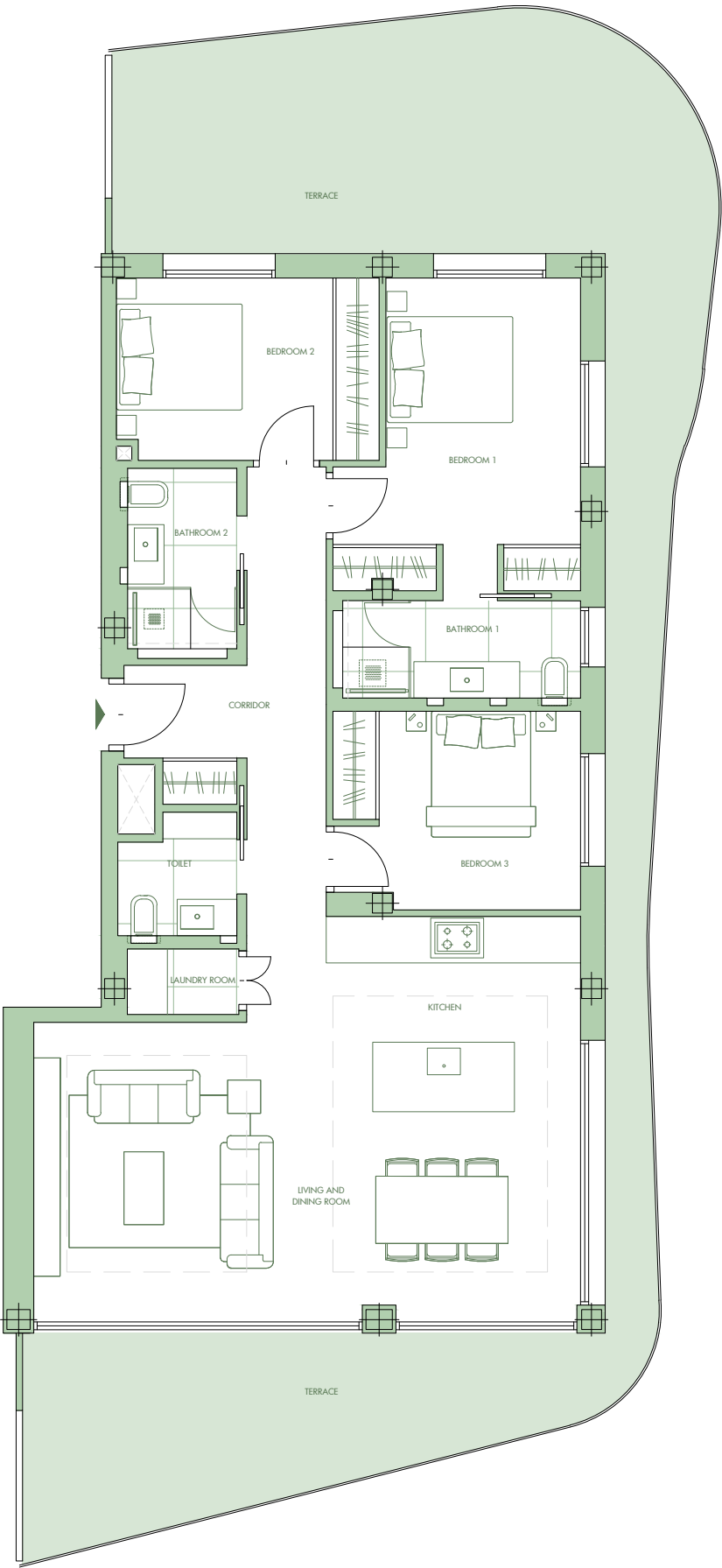


BEDROOMS	3
BATHROOMS	2
GUEST BATHROOMS	1
GROSS LIVING AREA	
129,76 m²	
TOTAL TERRACE	
66,88 m²	
COVERED TERRACE	
57,70 m²	
UNCOVERED TERRACE	
9,18 m²	
GARAGE SPACES	
3-4	
EXTERNAL STORAGE ROOM	
13,14 m²	

INSIDE NET LIVING AREA

LIVING AND DINING ROOM	32,07 m²
CORRIDOR	13,45 m²
KITCHEN	11,34 m²
LAUNDRY ROOM	1,67 m²
BEDROOM 1	15,24 m²
BEDROOM 2	10,84 m²
BEDROOM 3	10,90 m²
BATHROOM 1	5,28 m²
BATHROOM 2	4,49 m²
TOILET	3,05 m²

NET LIVING AREA 108,33 m²

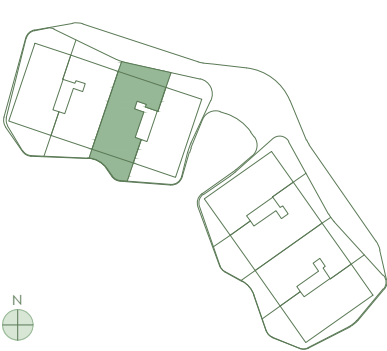


This document is for information purposes only and may be subject to change due to the technical requirements of the project. All furniture, including that in the kitchen, is merely indicative; door swings and the distribution of sanitary appliances are not binding. The surfaces indicated are approximate and may be subject to change for technical reasons during the execution of the project.



West - 3 1 2

FIRST FLOOR

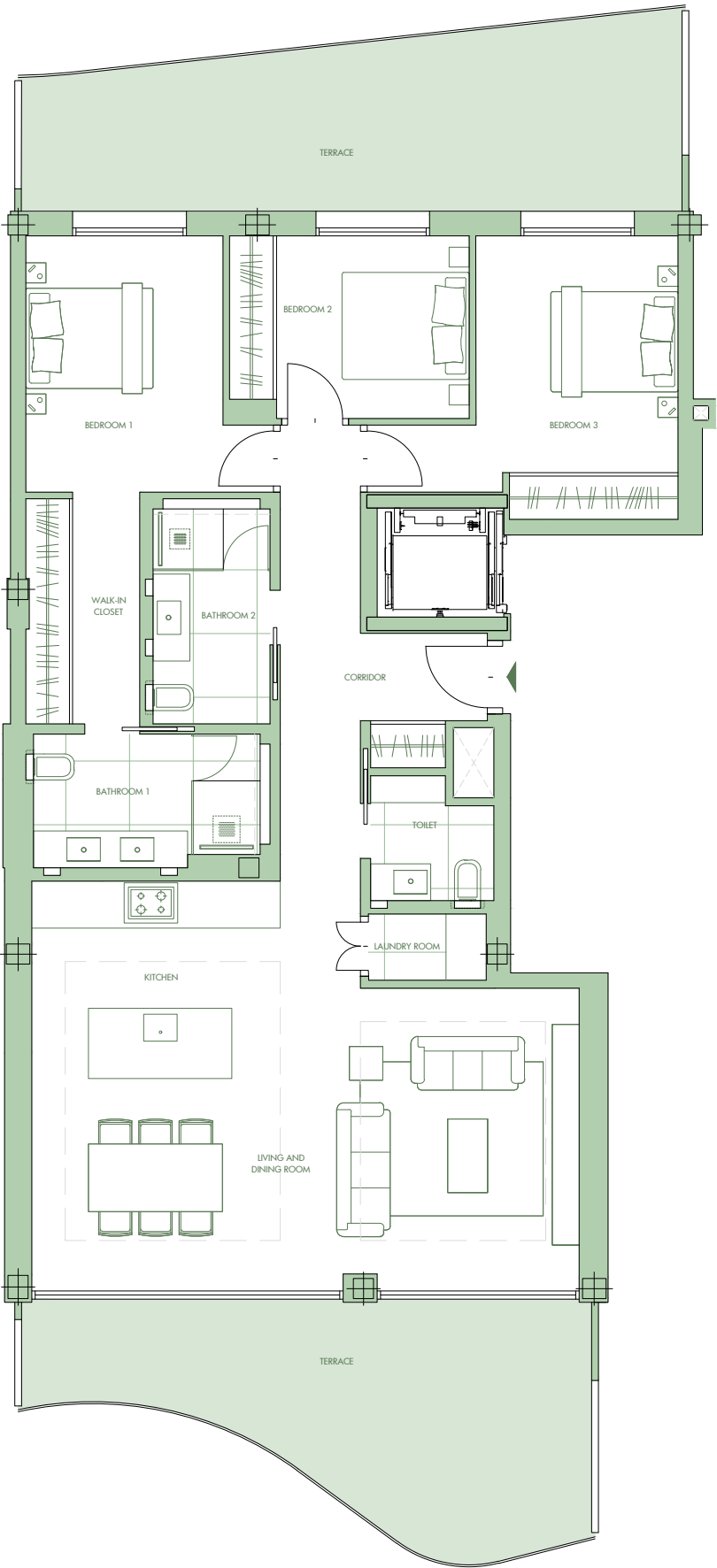


BEDROOMS	3
BATHROOMS	2
GUEST BATHROOMS	1
GROSS LIVING AREA	135,69 m <sup>2</sup>
TOTAL TERRACE	47,88 m <sup>2</sup>
COVERED TERRACE	44,57 m <sup>2</sup>
UNCOVERED TERRACE	3,31 m <sup>2</sup>
GARAGE SPACES	17-18
EXTERNAL STORAGE ROOM	11,79 m <sup>2</sup>

INSIDE NET LIVING AREA

LIVING AND DINING ROOM	31,87 m <sup>2</sup>
CORRIDOR	13,37 m <sup>2</sup>
KITCHEN	10,96 m <sup>2</sup>
LAUNDRY ROOM	1,74 m <sup>2</sup>
BEDROOM 1	12,03 m <sup>2</sup>
WALK-IN CLOSET	5,78 m <sup>2</sup>
BEDROOM 2	9,57 m <sup>2</sup>
BEDROOM 3	14,19 m <sup>2</sup>
BATHROOM 1	6,55 m <sup>2</sup>
BATHROOM 2	5,63 m <sup>2</sup>
TOILET	3,12 m <sup>2</sup>

NET LIVING AREA 114,81 m<sup>2</sup>



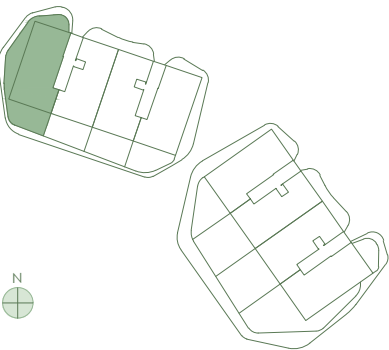
This document is for information purposes only and may be subject to change due to the technical requirements of the project. All furniture, including that in the kitchen, is merely indicative; door swings and the distribution of sanitary appliances are not binding. The surfaces indicated are approximate and may be subject to change for technical reasons during the execution of the project.





West - 402

GROUND FLOOR



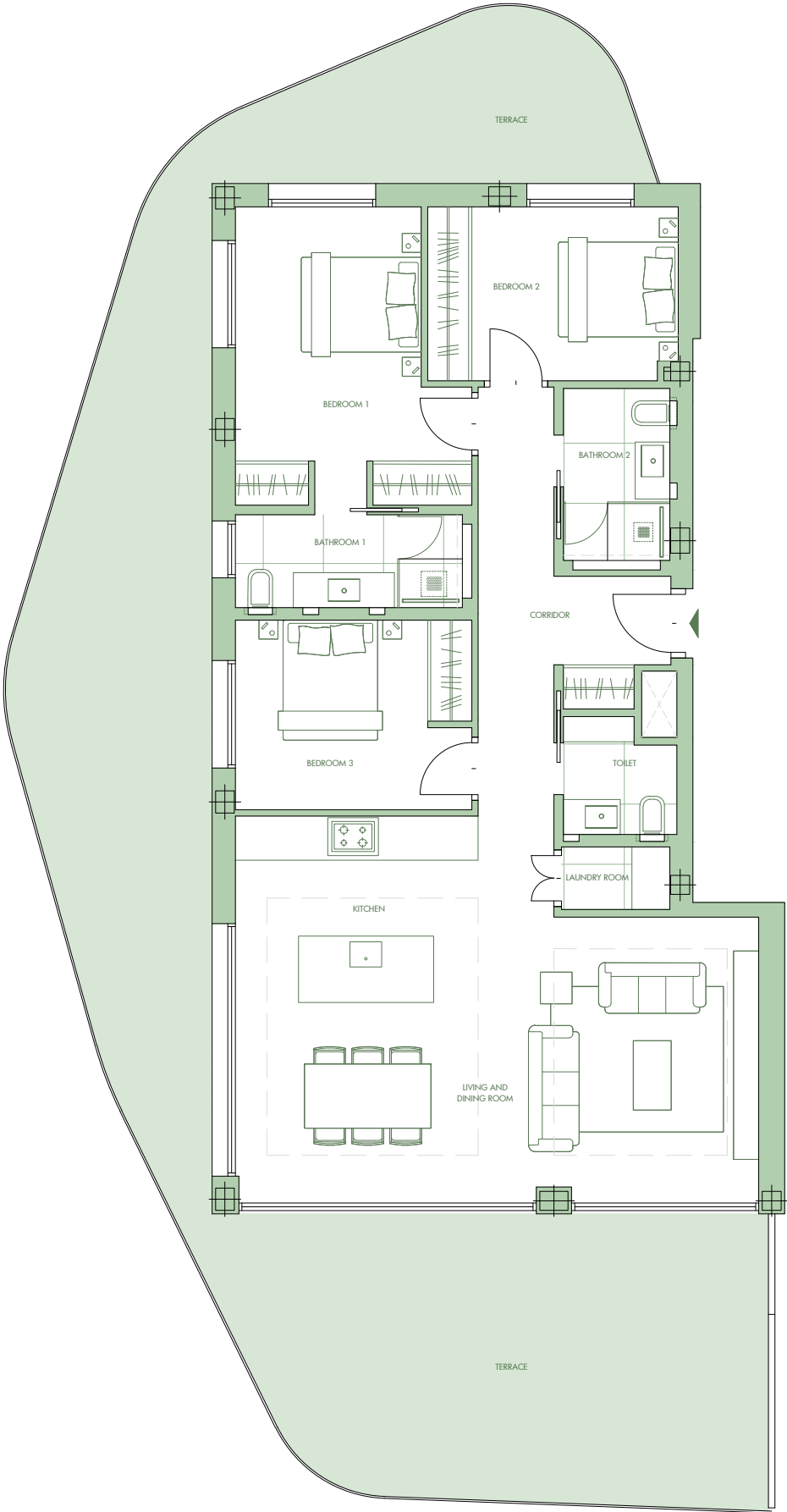
- BEDROOMS **3**
- BATHROOMS **2**
- GUEST BATHROOMS **1**

GROSS LIVING AREA	129,76 m²
TOTAL TERRACE	88,31 m²
COVERED TERRACE	73,51 m²
UNCOVERED TERRACE	14,80 m²
GARAGE SPACES	19-20
EXTERNAL STORAGE ROOM	12,21 m²

INSIDE NET LIVING AREA

LIVING AND DINING ROOM	32,17 m²
CORRIDOR	13,45 m²
KITCHEN	11,34 m²
LAUNDRY ROOM	1,70 m²
BEDROOM 1	15,30 m²
BEDROOM 2	10,83 m²
BEDROOM 3	11,16 m²
BATHROOM 1	5,28 m²
BATHROOM 2	4,49 m²
TOILET	3,05 m²

NET LIVING AREA 108,87 m²

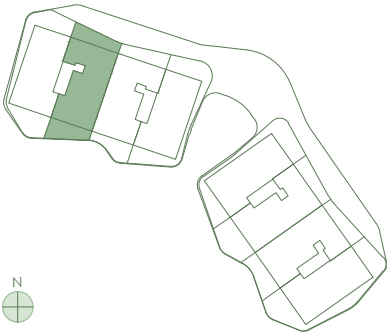


This document is for information purposes only and may be subject to change due to the technical requirements of the project. All furniture, including that in the kitchen, is merely indicative; door swings and the distribution of sanitary appliances are not binding. The surfaces indicated are approximate and may be subject to change for technical reasons during the execution of the project.



West - 4 1 1

FIRST FLOOR



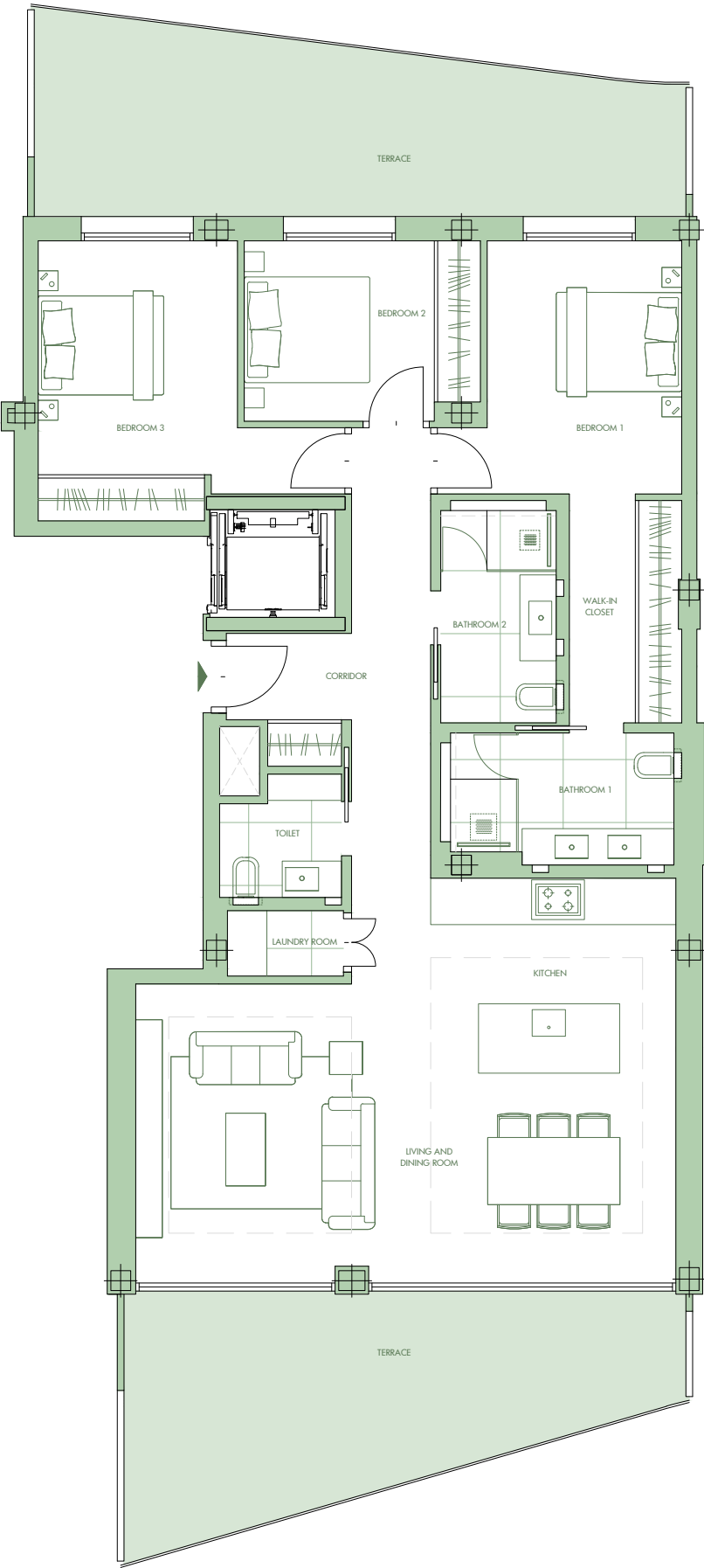
BEDROOMS	3
BATHROOMS	2
GUEST BATHROOMS	1
GROSS LIVING AREA	
135,69 m²	
TOTAL TERRACE	
50,00 m²	
COVERED TERRACE	
43,83 m²	
UNCOVERED TERRACE	
6,16 m²	
GARAGE SPACES	
33-34	
EXTERNAL STORAGE ROOM	
12,21 m²	

INSIDE NET LIVING AREA

LIVING AND DINING ROOM	31,87 m²
CORRIDOR	13,37 m²
KITCHEN	10,96 m²
LAUNDRY ROOM	1,74 m²
BEDROOM 01	12,03 m²
WALK-IN CLOSET	5,78 m²
BEDROOM 2	9,57 m²
BEDROOM 3	14,19 m²
BATHROOM 1	6,55 m²
BATHROOM 2	5,63 m²
TOILET	3,12 m²

NET LIVING AREA 114,81 m²

This document is for information purposes only and may be subject to change due to the technical requirements of the project. All furniture, including that in the kitchen, is merely indicative; door swings and the distribution of sanitary appliances are not binding. The surfaces indicated are approximate and may be subject to change for technical reasons during the execution of the project.



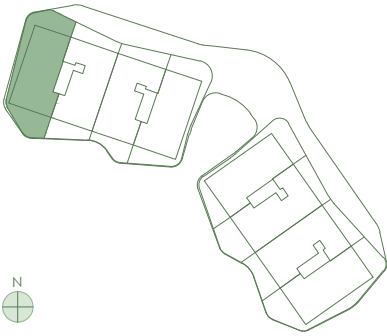
Scale 1:100

0 1 2 3 4



West - 4 1 2

FIRST FLOOR

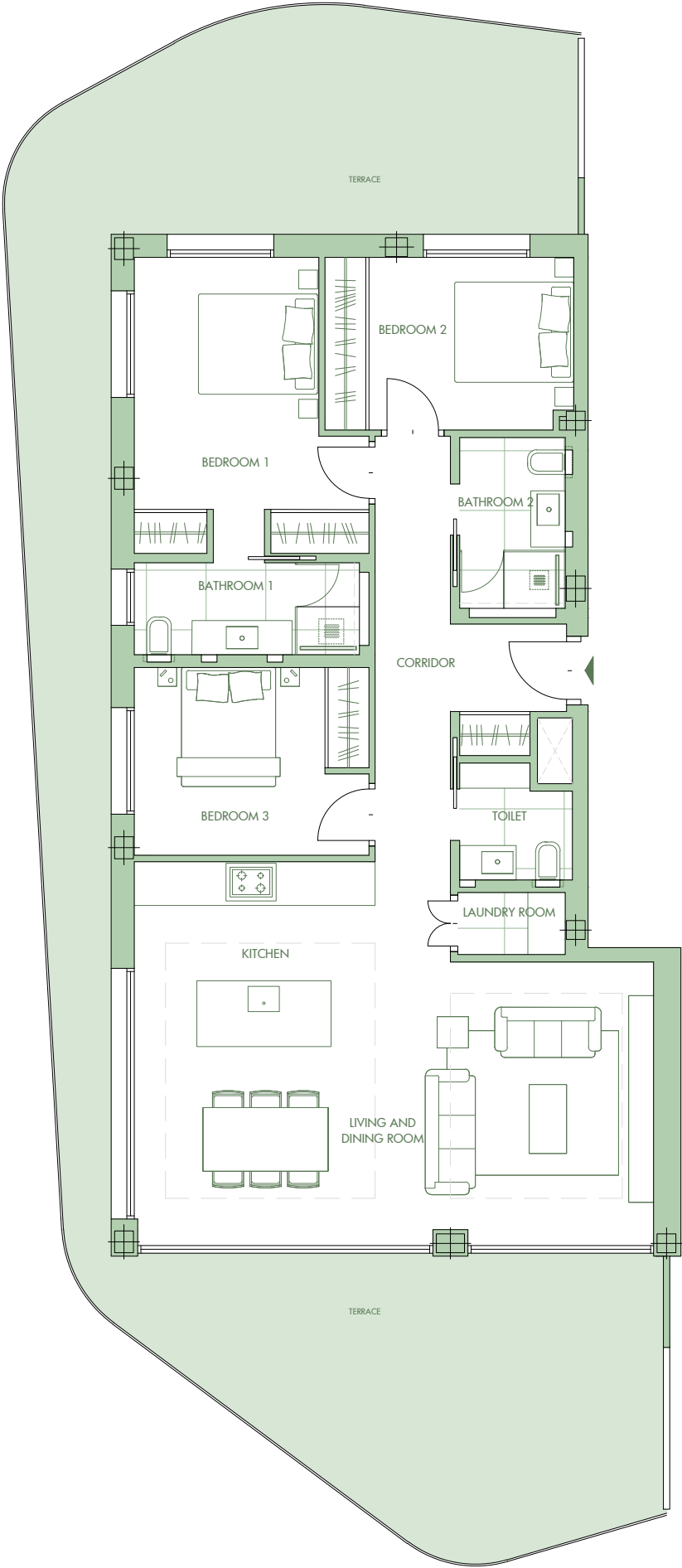


BEDROOMS	3
BATHROOMS	2
GUEST BATHROOMS	1
GROSS LIVING AREA	
129,76 m²	
TOTAL TERRACE	
80,82 m²	
COVERED TERRACE	
63,32 m²	
UNCOVERED TERRACE	
17,50 m²	
GARAGE SPACES	
27-28	
EXTERNAL STORAGE ROOM	
14,34 m²	

INSIDE NET LIVING AREA

LIVING AND DINING ROOM	32,17 m²
CORRIDOR	13,45 m²
KITCHEN	11,34 m²
LAUNDRY ROOM	1,70 m²
BEDROOM 1	15,30 m²
BEDROOM 2	10,83 m²
BEDROOM 3	11,16 m²
BATHROOM 1	5,28 m²
BATHROOM 2	4,49 m²
TOILET	3,05 m²

NET LIVING AREA 108,87 m²



This document is for information purposes only and may be subject to change due to the technical requirements of the project. All furniture, including that in the kitchen, is merely indicative; door swings and the distribution of sanitary appliances are not binding. The surfaces indicated are approximate and may be subject to change for technical reasons during the execution of the project.

