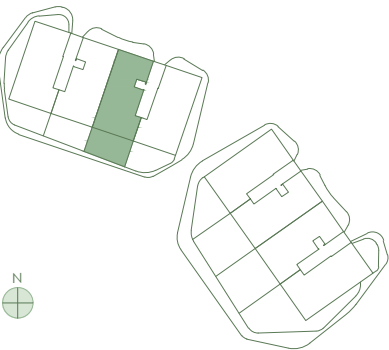


West - 3 0 2

GROUND FLOOR



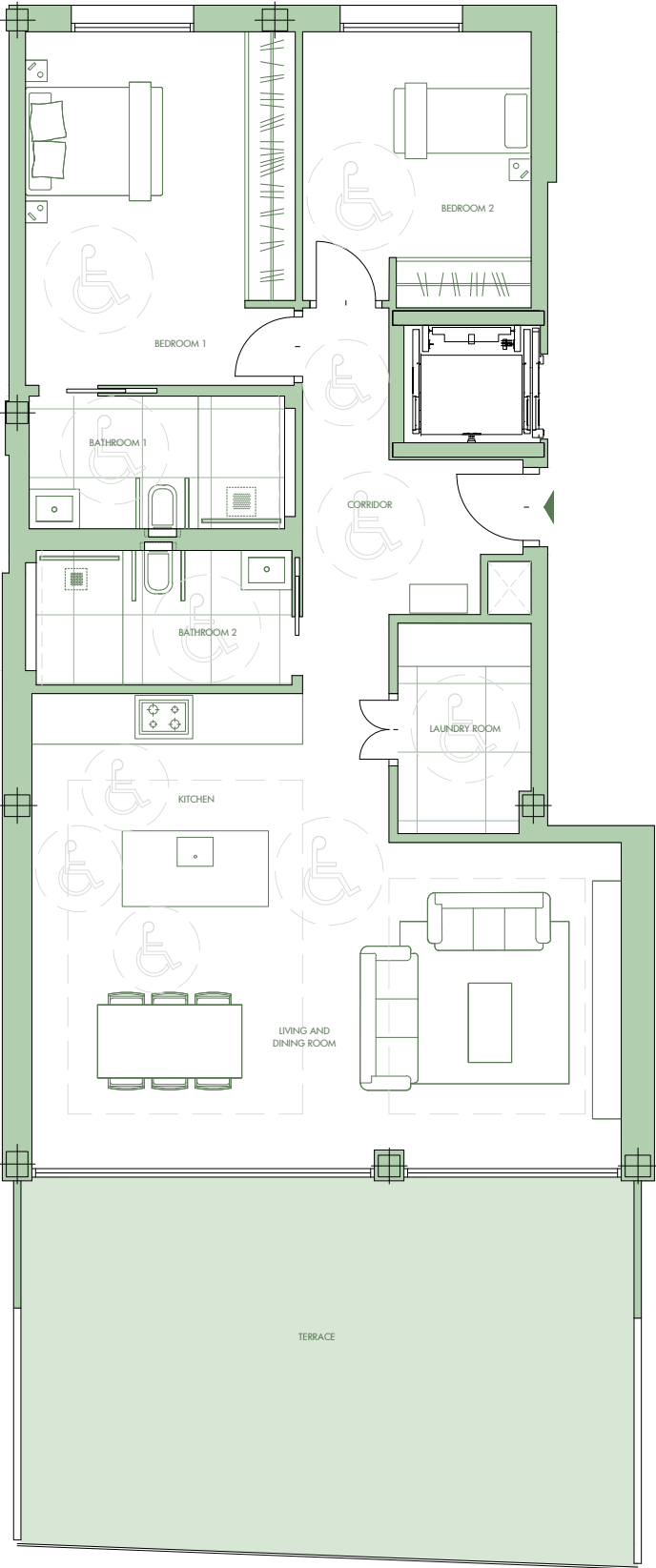
- BEDROOMS 2
- BATHROOMS 2
- GUEST BATHROOMS -

GROSS LIVING AREA	123,00 m²
TOTAL TERRACE	44,75 m²
COVERED TERRACE	26,37 m²
UNCOVERED TERRACE	18,38 m²
GARAGE SPACES	1-2
EXTERNAL STORAGE ROOM	18,07 m²

INSIDE NET LIVING AREA

LIVING AND DINING ROOM	33,55 m²
CORRIDOR	12,39 m²
KITCHEN	11,09 m²
LAUNDRY ROOM	5,30 m²
BEDROOM 1	18,28 m²
BEDROOM 2	11,96 m²
BATHROOM 1	6,52 m²
BATHROOM 2	6,62 m²

NET LIVING AREA 105,71 m²

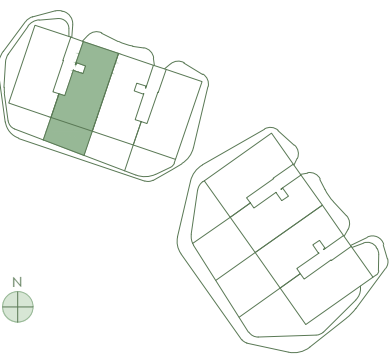


This document is for information purposes only and may be subject to change due to the technical requirements of the project. All furniture, including that in the kitchen, is merely indicative; door swings and the distribution of sanitary appliances are not binding. The surfaces indicated are approximate and may be subject to change for technical reasons during the execution of the project.



West - 401

GROUND FLOOR



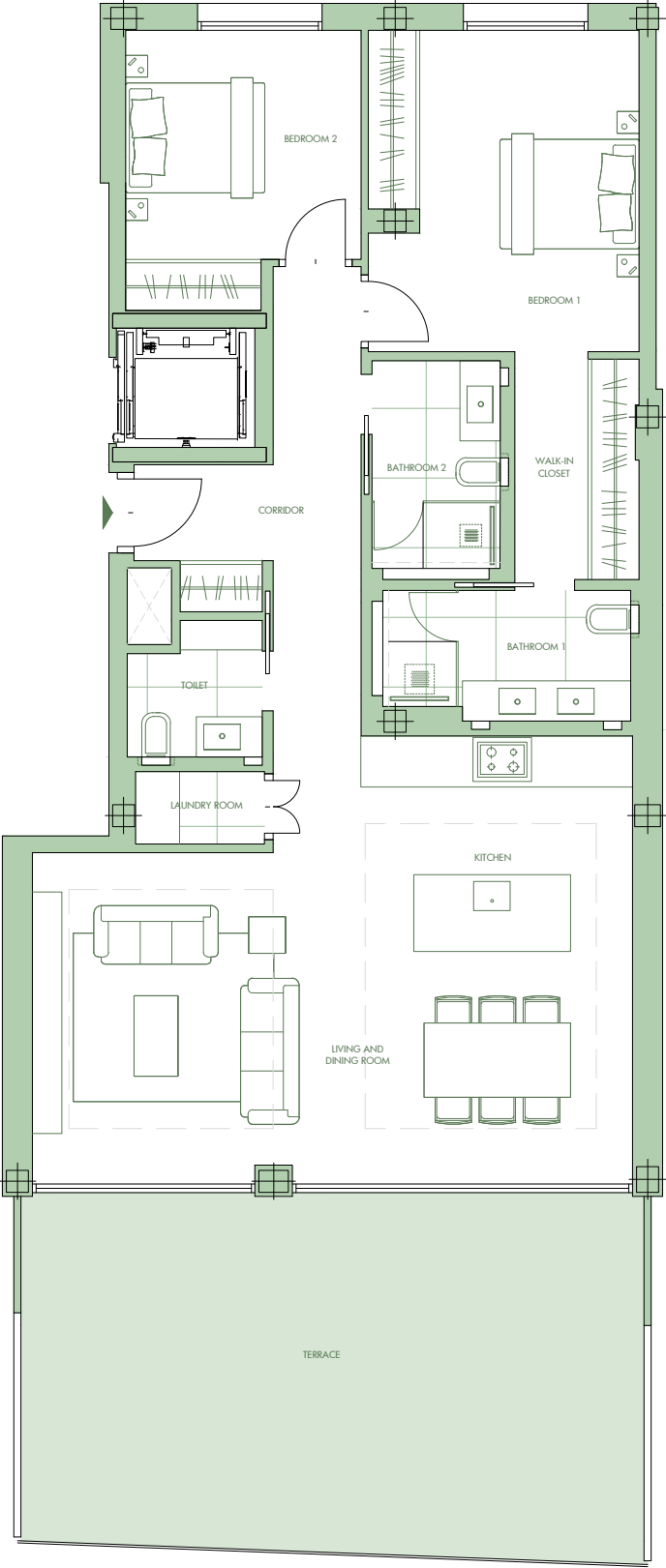
- BEDROOMS 2
- BATHROOMS 2
- GUEST BATHROOMS 1

GROSS LIVING AREA	123,00 m²
TOTAL TERRACE	41,94 m²
COVERED TERRACE	27,94 m²
UNCOVERED TERRACE	14,00 m²
GARAGE SPACES	5-6
EXTERNAL STORAGE ROOM	14,14 m²

INSIDE NET LIVING AREA

LIVING AND DINING ROOM	31,99 m²
CORRIDOR	12,89 m²
KITCHEN	10,96 m²
LAUNDRY ROOM	1,74 m²
BEDROOM 1	16,03 m²
BEDROOM 2	11,35 m²
WALK-IN CLOSET	5,18 m²
BATHROOM 1	5,84 m²
BATHROOM 2	4,98 m²
TOILET	3,12 m²

NET LIVING AREA 104,08 m²



This document is for information purposes only and may be subject to change due to the technical requirements of the project. All furniture, including that in the kitchen, is merely indicative; door swings and the distribution of sanitary appliances are not binding. The surfaces indicated are approximate and may be subject to change for technical reasons during the execution of the project.

