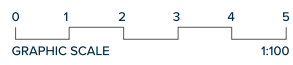


## VILLA N°2

### FIRST FLOOR

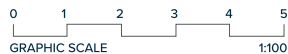
| LIVING AREA           |                             |
|-----------------------|-----------------------------|
| MAIN HALL             | 16,35 m <sup>2</sup>        |
| STAIRS                | 6,50 m <sup>2</sup>         |
| LOUNGE-DINING-KITCHEN | 84,95 m <sup>2</sup>        |
| BATHROOM 1            | 5,65 m <sup>2</sup>         |
| BEDROOM 1             | 12,49 m <sup>2</sup>        |
| <b>TOTAL</b>          | <b>126,60 m<sup>2</sup></b> |

| ACCESS & TERRACES |                             |
|-------------------|-----------------------------|
| PORCH ACCESS      | 3,29 m <sup>2</sup>         |
| PARKING (PERGOLA) | 39,60 m <sup>2</sup>        |
| TERRACE 1         | 6,55 m <sup>2</sup>         |
| PERGOLA 1         | 49,03 m <sup>2</sup>        |
| SWIMMING POOL     | 63,78 m <sup>2</sup>        |
| <b>TOTAL</b>      | <b>162,25 m<sup>2</sup></b> |



|          |    |
|----------|----|
| Entrance | 1  |
|          | 0  |
|          | -1 |

These images are not contractual but only for illustrative purposes. The images are subject to technical, legal or commercial modifications approved by the project management or the competent authority. The 3D images corresponding to the facades, common elements, and the rest of the spaces are merely indicative and will be subject to verification or Modification in the technical projects. The furniture of the 3D images is not included and the equipment of the villas will be indicated in the corresponding building and quality specifications. The energy certification corresponds with the one established in the project in process. All the information and documentation will be provided according to the terms established in the Royal Decree 515/1989 and in the rest of the autonomous or state regulations currently in force that could complement the Mentioned Decree.



Entrance

|    |
|----|
| 1  |
| 0  |
| -1 |

## VILLA N°2

### GROUND FLOOR

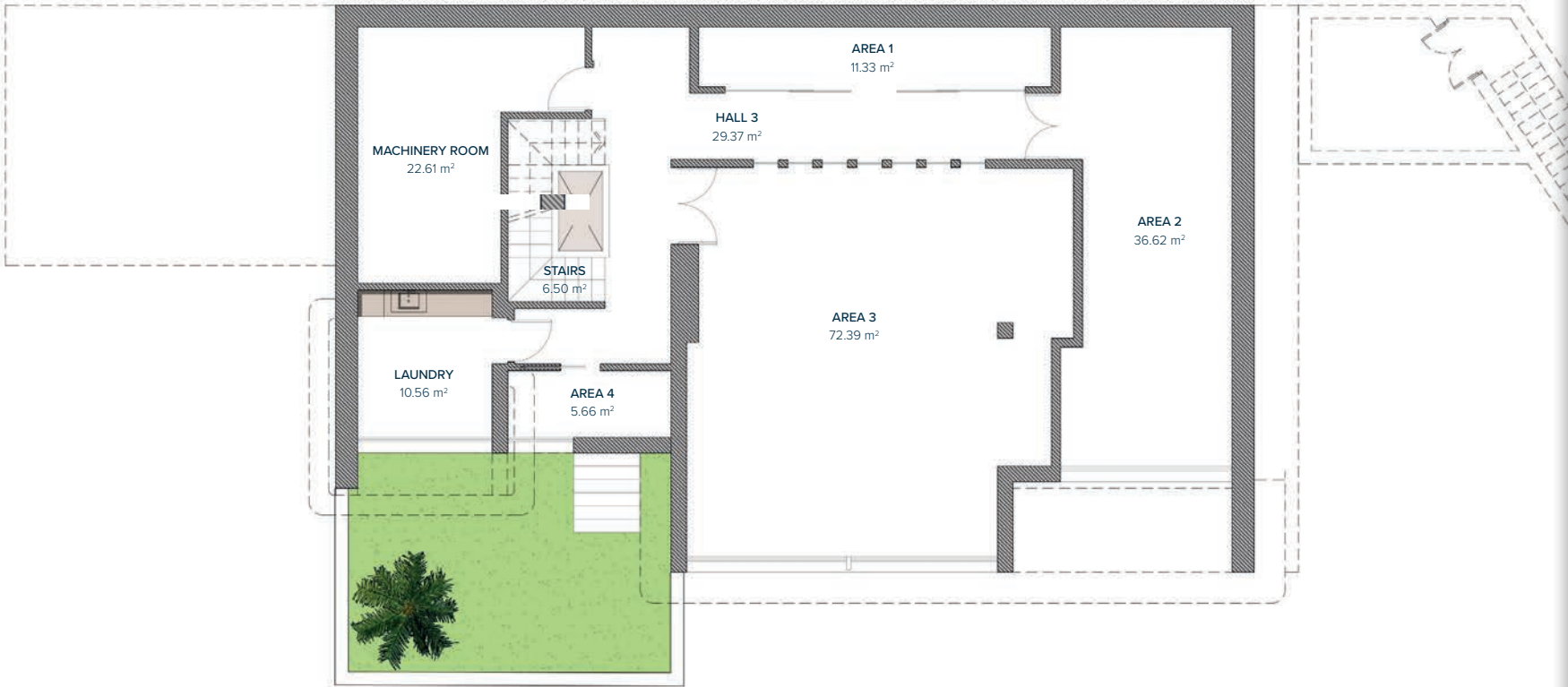
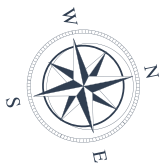
#### BEDROOMS

|              |                            |
|--------------|----------------------------|
| HALL 1       | 16,67 m <sup>2</sup>       |
| STAIRS       | 6,50 m <sup>2</sup>        |
| BATHROOM 2   | 4,68 m <sup>2</sup>        |
| BEDROOM 2    | 17,65 m <sup>2</sup>       |
| BATHROOM 3   | 4,68 m <sup>2</sup>        |
| BEDROOM 3    | 16,32 m <sup>2</sup>       |
| BATHROOM 4   | 5,00 m <sup>2</sup>        |
| BEDROOM 4    | 19,69 m <sup>2</sup>       |
| <b>TOTAL</b> | <b>91,85 m<sup>2</sup></b> |

#### PERGOLAS & TERRACES

|                   |                            |
|-------------------|----------------------------|
| PERGOLA 2         | 8,30 m <sup>2</sup>        |
| TERRACE 2         | 9,25 m <sup>2</sup>        |
| TERRACE 3         | 17,73 m <sup>2</sup>       |
| POOL MACHINE ROOM | 11,09 m <sup>2</sup>       |
| <b>TOTAL</b>      | <b>46,25 m<sup>2</sup></b> |

These images are not contractual but only for illustrative purposes. The images are subject to technical, legal or commercial modifications approved by the project management or the competent authority. The 3D images corresponding to the facades, common elements, and the rest of the spaces are merely indicative and will be subject to verification or Modification in the technical projects. The furniture of the 3D images is not included and the equipment of the villas will be indicated in the corresponding building and quality specifications. The energy certification corresponds with the one established in the project in process. All the information and documentation will be provided according to the terms established in the Royal Decree 515/1989 and in the rest of the autonomous or state regulations currently in force that could complement the Mentioned Decree.



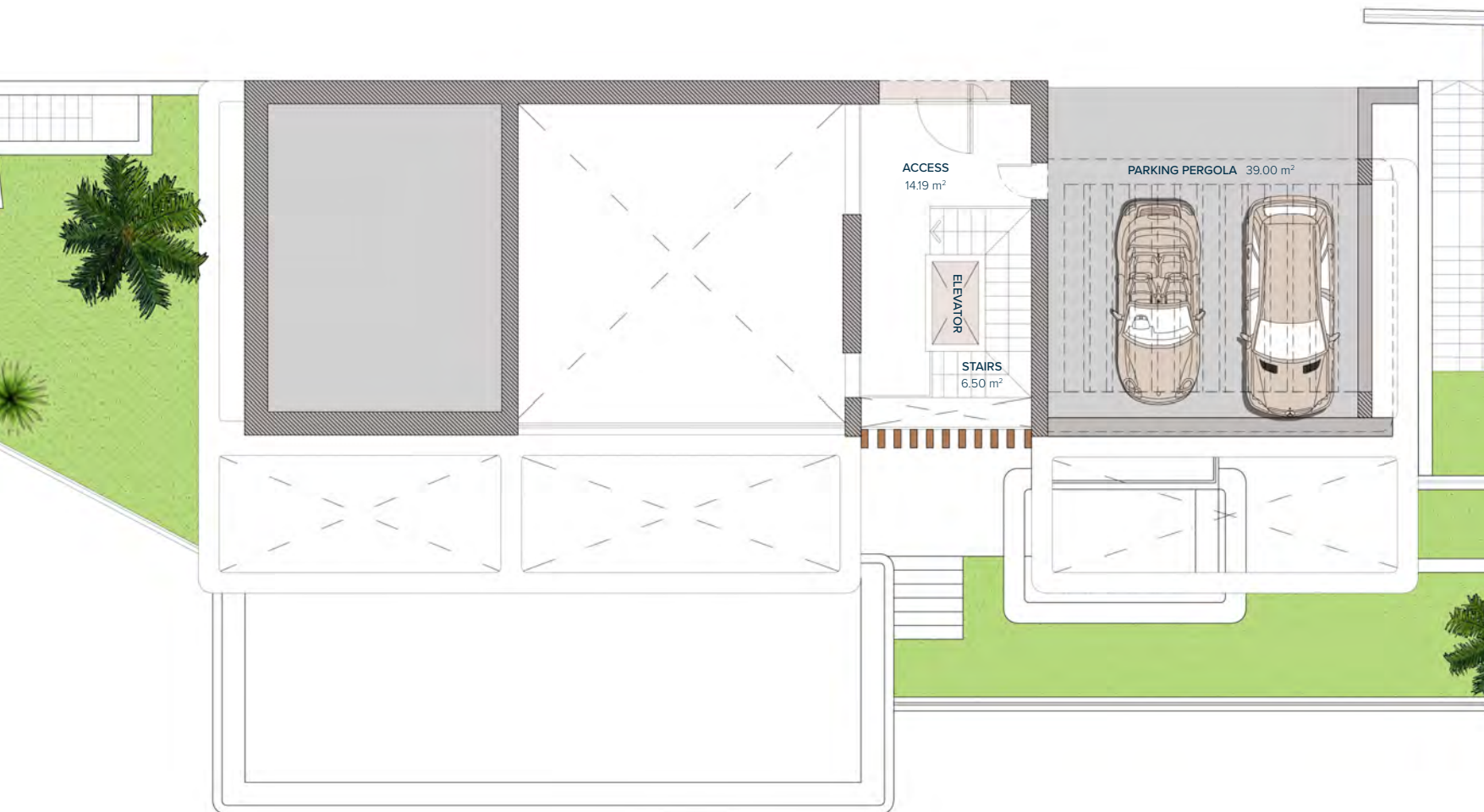
|          |    |
|----------|----|
| Entrance | 1  |
|          | 0  |
|          | -1 |

## VILLA N°2

### BASEMENT

|                |                             |
|----------------|-----------------------------|
| HALL 3         | 29,37 m <sup>2</sup>        |
| AREA 1         | 11,33 m <sup>2</sup>        |
| AREA 2         | 36,62 m <sup>2</sup>        |
| AREA 3         | 72,39 m <sup>2</sup>        |
| AREA 4         | 5,66 m <sup>2</sup>         |
| STAIRS         | 6,50 m <sup>2</sup>         |
| MACHINERY ROOM | 22,61 m <sup>2</sup>        |
| LAUNDRY        | 10,56 m <sup>2</sup>        |
| PATIO          | 1,80 m <sup>2</sup>         |
| <b>TOTAL</b>   | <b>196,84 m<sup>2</sup></b> |

These images are not contractual but only for illustrative purposes. The images are subject to technical, legal or commercial modifications approved by the project management or the competent authority. The 3D images corresponding to the facades, common elements, and the rest of the spaces are merely indicative and will be subject to verification or Modification in the technical projects. The furniture of the 3D images is not included and the equipment of the villas will be indicated in the corresponding building and quality specifications. The energy certification corresponds with the one established in the project in process. All the information and documentation will be provided according to the terms established in the Royal Decree 515/1989 and in the rest of the autonomous or state regulations currently in force that could complement the Mentioned Decree.

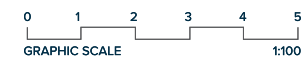


## VILLA Nº7

### SECOND FLOOR ENTRANCE

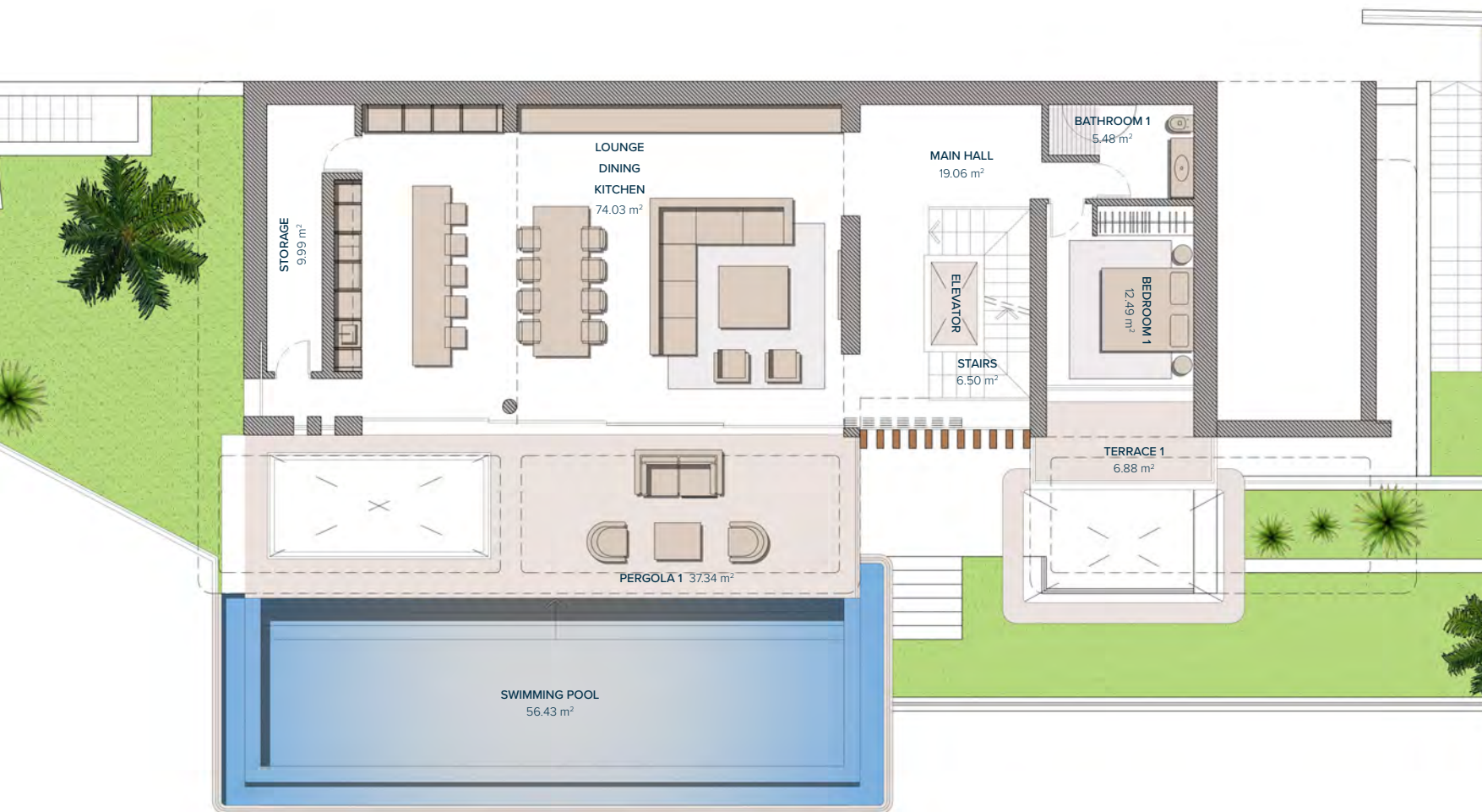
|                   |                            |
|-------------------|----------------------------|
| ACCESS            | 14,19 m <sup>2</sup>       |
| STAIRS            | 6,50 m <sup>2</sup>        |
| <b>TOTAL</b>      | <b>20,69 m<sup>2</sup></b> |
| PARKING (PERGOLA) | 39,00 m <sup>2</sup>       |
| <b>TOTAL</b>      | <b>39,00 m<sup>2</sup></b> |

|          |    |
|----------|----|
| Entrance | 2  |
|          | 1  |
|          | 0  |
|          | -1 |



These images are not contractual but only for illustrative purposes. The images are subject to technical, legal or commercial modifications approved by the project management or the competent authority. The 3D images corresponding to the facades, common elements, and the rest of the spaces are merely indicative and will be subject to verification or Modification in the technical projects. The furniture of the 3D images is not included and the equipment of the villas will be indicated in the corresponding building and quality specifications. The energy certification corresponds with the one established in the project in process. All the information and documentation will be provided according to the terms established in the Royal Decree 515/1989 and in the rest of the autonomous or state regulations currently in force that could complement the Mentioned Decree.





## VILLA Nº7

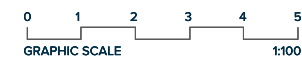
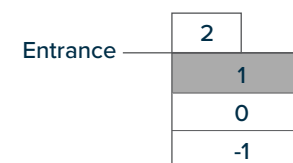
### FIRST FLOOR

#### LIVING AREA

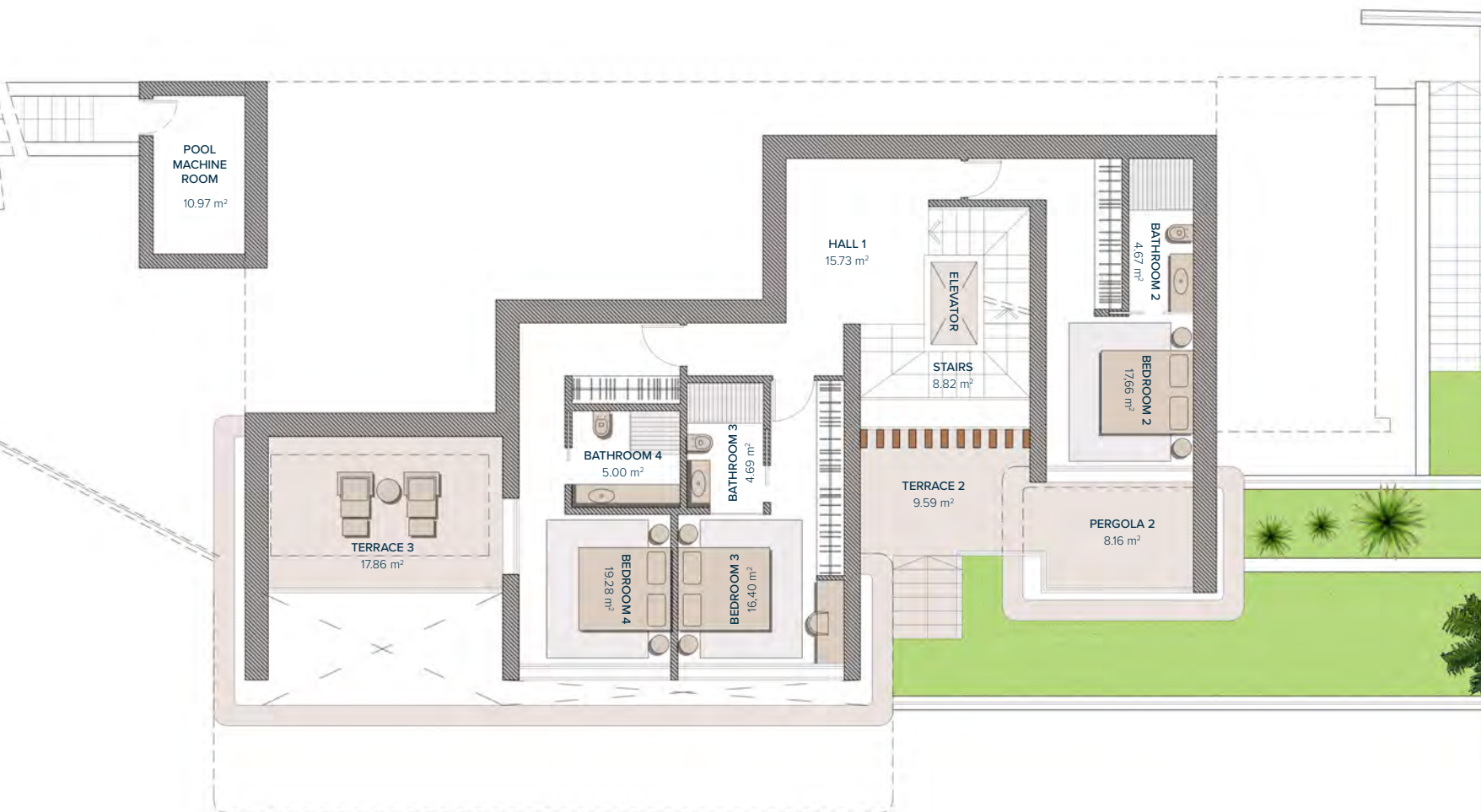
|                           |                             |
|---------------------------|-----------------------------|
| MAIN HALL                 | 19,06 m <sup>2</sup>        |
| STAIRS                    | 6,50 m <sup>2</sup>         |
| LOUNGE-<br>DINING-KITCHEN | 74,03 m <sup>2</sup>        |
| BATHROOM 1                | 5,48 m <sup>2</sup>         |
| BEDROOM 1                 | 12,49 m <sup>2</sup>        |
| STORAGE                   | 9,99 m <sup>2</sup>         |
| <b>TOTAL</b>              | <b>127,55 m<sup>2</sup></b> |

#### PERGOLAS & TERRACES

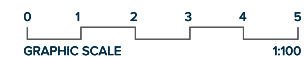
|              |                            |
|--------------|----------------------------|
| TERRACE 1    | 6,88 m <sup>2</sup>        |
| PERGOLA 1    | 37,34 m <sup>2</sup>       |
| <b>TOTAL</b> | <b>44,22 m<sup>2</sup></b> |



These images are not contractual but only for illustrative purposes. The images are subject to technical, legal or commercial modifications approved by the project management or the competent authority. The 3D images corresponding to the facades, common elements, and the rest of the spaces are merely indicative and will be subject to verification or Modification in the technical projects. The furniture of the 3D images is not included and the equipment of the villas will be indicated in the corresponding building and quality specifications. The energy certification corresponds with the one established in the project in process. All the information and documentation will be provided according to the terms established in the Royal Decree 515/1989 and in the rest of the autonomous or state regulations currently in force that could complement the Mentioned Decree.



|          |    |
|----------|----|
| Entrance | 2  |
|          | 1  |
|          | 0  |
|          | -1 |



## VILLA N°7

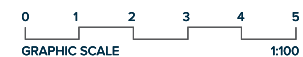
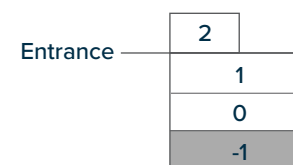
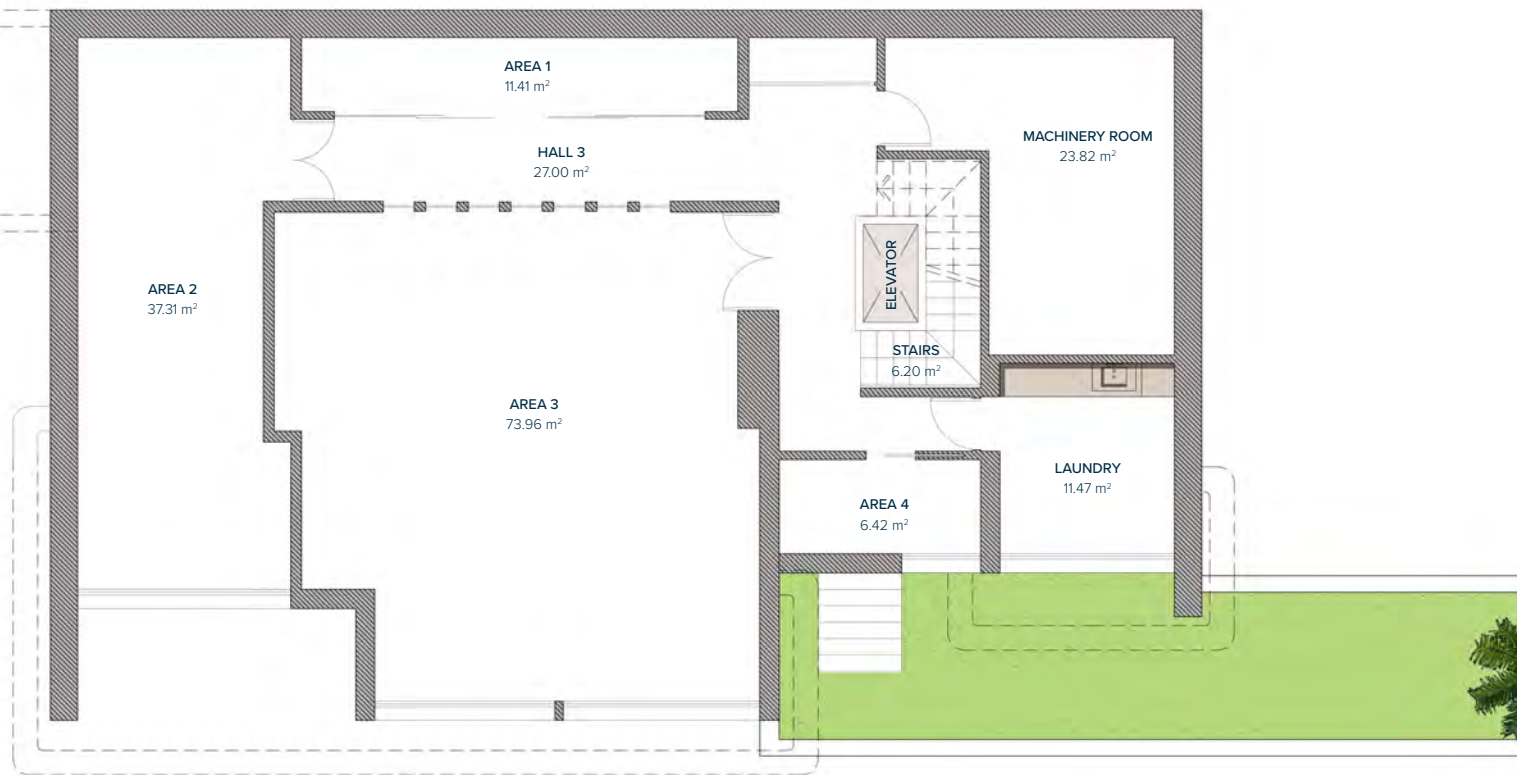
### BEDROOMS

|              |                            |
|--------------|----------------------------|
| HALL 1       | 15,73 m <sup>2</sup>       |
| STAIRS       | 8,82 m <sup>2</sup>        |
| BATHROOM 2   | 4,67 m <sup>2</sup>        |
| BEDROOM 2    | 17,66 m <sup>2</sup>       |
| BATHROOM 3   | 4,69 m <sup>2</sup>        |
| BEDROOM 3    | 16,40 m <sup>2</sup>       |
| BATHROOM 4   | 5,00 m <sup>2</sup>        |
| BEDROOM 4    | 19,28 m <sup>2</sup>       |
| <b>TOTAL</b> | <b>92,25 m<sup>2</sup></b> |

### PERGOLAS & TERRACES

|                   |                            |
|-------------------|----------------------------|
| PERGOLA 2         | 8,16 m <sup>2</sup>        |
| TERRACE 2         | 9,59 m <sup>2</sup>        |
| TERRACE 3         | 17,86 m <sup>2</sup>       |
| POOL MACHINE ROOM | 10,97 m <sup>2</sup>       |
| <b>TOTAL</b>      | <b>46,13 m<sup>2</sup></b> |

These images are not contractual but only for illustrative purposes. The images are subject to technical, legal or commercial modifications approved by the project management or the competent authority. The 3D images corresponding to the facades, common elements, and the rest of the spaces are merely indicative and will be subject to verification or Modification in the technical projects. The furniture of the 3D images is not included and the equipment of the villas will be indicated in the corresponding building and quality specifications. The energy certification corresponds with the one established in the project in process. All the information and documentation will be provided according to the terms established in the Royal Decree 515/1989 and in the rest of the autonomous or state regulations currently in force that could complement the Mentioned Decree.



## VILLA N°7

### BASEMENT

|                |                             |
|----------------|-----------------------------|
| HALL 3         | 27,00 m <sup>2</sup>        |
| AREA 1         | 11,41 m <sup>2</sup>        |
| AREA 2         | 37,31 m <sup>2</sup>        |
| AREA 3         | 73,96 m <sup>2</sup>        |
| AREA 4         | 6,42 m <sup>2</sup>         |
| STAIRS         | 6,20 m <sup>2</sup>         |
| MACHINERY ROOM | 23,82 m <sup>2</sup>        |
| LAUNDRY        | 11,47 m <sup>2</sup>        |
| PATIO (LIFT)   | 1,80 m <sup>2</sup>         |
| <b>TOTAL</b>   | <b>199,39 m<sup>2</sup></b> |

These images are not contractual but only for illustrative purposes. The images are subject to technical, legal or commercial modifications approved by the project management or the competent authority. The 3D images corresponding to the facades, common elements, and the rest of the spaces are merely indicative and will be subject to verification or Modification in the technical projects. The furniture of the 3D images is not included and the equipment of the villas will be indicated in the corresponding building and quality specifications. The energy certification corresponds with the one established in the project in process. All the information and documentation will be provided according to the terms established in the Royal Decree 515/1989 and in the rest of the autonomous or state regulations currently in force that could complement the Mentioned Decree.