



## VILLA N°1

### GROUND FLOOR

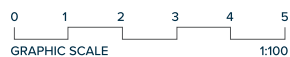
#### LIVING AREA

ENTRANCE	16,55 m <sup>2</sup>
STAIRS	6,50 m <sup>2</sup>
LOUNGE- DINING-KITCHEN	83,42 m <sup>2</sup>
BATHROOM 3	5,65 m <sup>2</sup>
BEDROOM 3	12,58 m <sup>2</sup>
<b>TOTAL</b>	<b>124,70 m<sup>2</sup></b>

#### ACCESS & TERRACES

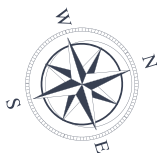
PORCH ACCESS	3,29 m <sup>2</sup>
PARKING (PERGOLA)	39,01 m <sup>2</sup>
TERRACE 1	8,52 m <sup>2</sup>
PERGOLA 1	52,29 m <sup>2</sup>
PERGOLA 2	11,51 m <sup>2</sup>
<b>TOTAL</b>	<b>114,62 m<sup>2</sup></b>

These images are not contractual but only for illustrative purposes. The images are subject to technical, legal or commercial modifications approved by the project management or the competent authority. The 3D images corresponding to the facades, common elements, and the rest of the spaces are merely indicative and will be subject to verification or Modification in the technical projects. The furniture of the 3D images is not included and the equipment of the villas will be indicated in the corresponding building and quality specifications. The energy certification corresponds with the one established in the project in process. All the information and documentation will be provided according to the terms established in the Royal Decree 515/1989 and in the rest of the autonomous or state regulations currently in force that could complement the Mentioned Decree.



Entrance

1
0
-1



## VILLA N°1

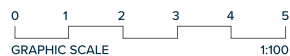
### FIRST FLOOR

#### BEDROOMS

HALL 1	16,97 m <sup>2</sup>
STAIRS	6,50 m <sup>2</sup>
BATHROOM 1	5,23 m <sup>2</sup>
BEDROOM 1	13,94 m <sup>2</sup>
BEDROOM 2	47,98 m <sup>2</sup>
BATHROOM 2	9,84 m <sup>2</sup>
<b>TOTAL</b>	<b>100,46 m<sup>2</sup></b>

#### TERRACES

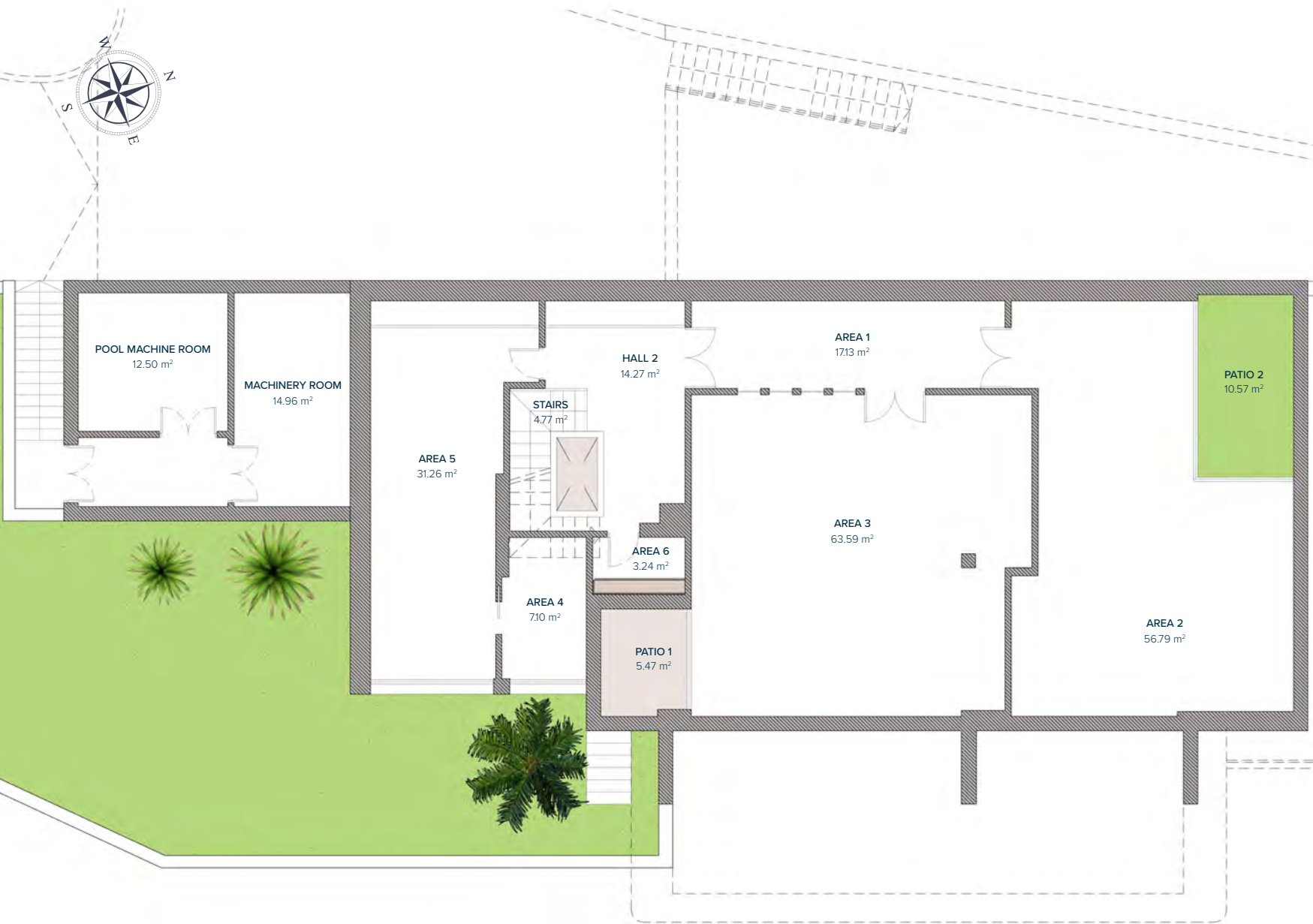
TERRACE 2	3,00 m <sup>2</sup>
TERRACE 3	29,73 m <sup>2</sup>
<b>TOTAL</b>	<b>32,73 m<sup>2</sup></b>



Entrance

1
0
-1

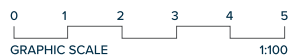
These images are not contractual but only for illustrative purposes. The images are subject to technical, legal or commercial modifications approved by the project management or the competent authority. The 3D images corresponding to the facades, common elements, and the rest of the spaces are merely indicative and will be subject to verification or Modification in the technical projects. The furniture of the 3D images is not included and the equipment of the villas will be indicated in the corresponding building and quality specifications. The energy certification corresponds with the one established in the project in process. All the information and documentation will be provided according to the terms established in the Royal Decree 515/1989 and in the rest of the autonomous or state regulations currently in force that could complement the Mentioned Decree.



## VILLA Nº1

### BASEMENT

HALL 2	14,27 m <sup>2</sup>
AREA 1	17,13 m <sup>2</sup>
AREA 2	56,79 m <sup>2</sup>
AREA 3	63,59 m <sup>2</sup>
AREA 4	7,10 m <sup>2</sup>
AREA 5	31,26 m <sup>2</sup>
AREA 6	3,24 m <sup>2</sup>
POOL MACHINE ROOM	12,50 m <sup>2</sup>
MACHINERY ROOM	14,96 m <sup>2</sup>
STAIRS	4,77 m <sup>2</sup>
PATIO	1,80 m <sup>2</sup>
PATIO 1	5,47 m <sup>2</sup>
PATIO 2	10,57 m <sup>2</sup>
<b>TOTAL</b>	<b>243,45 m<sup>2</sup></b>

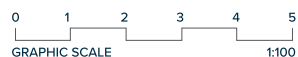
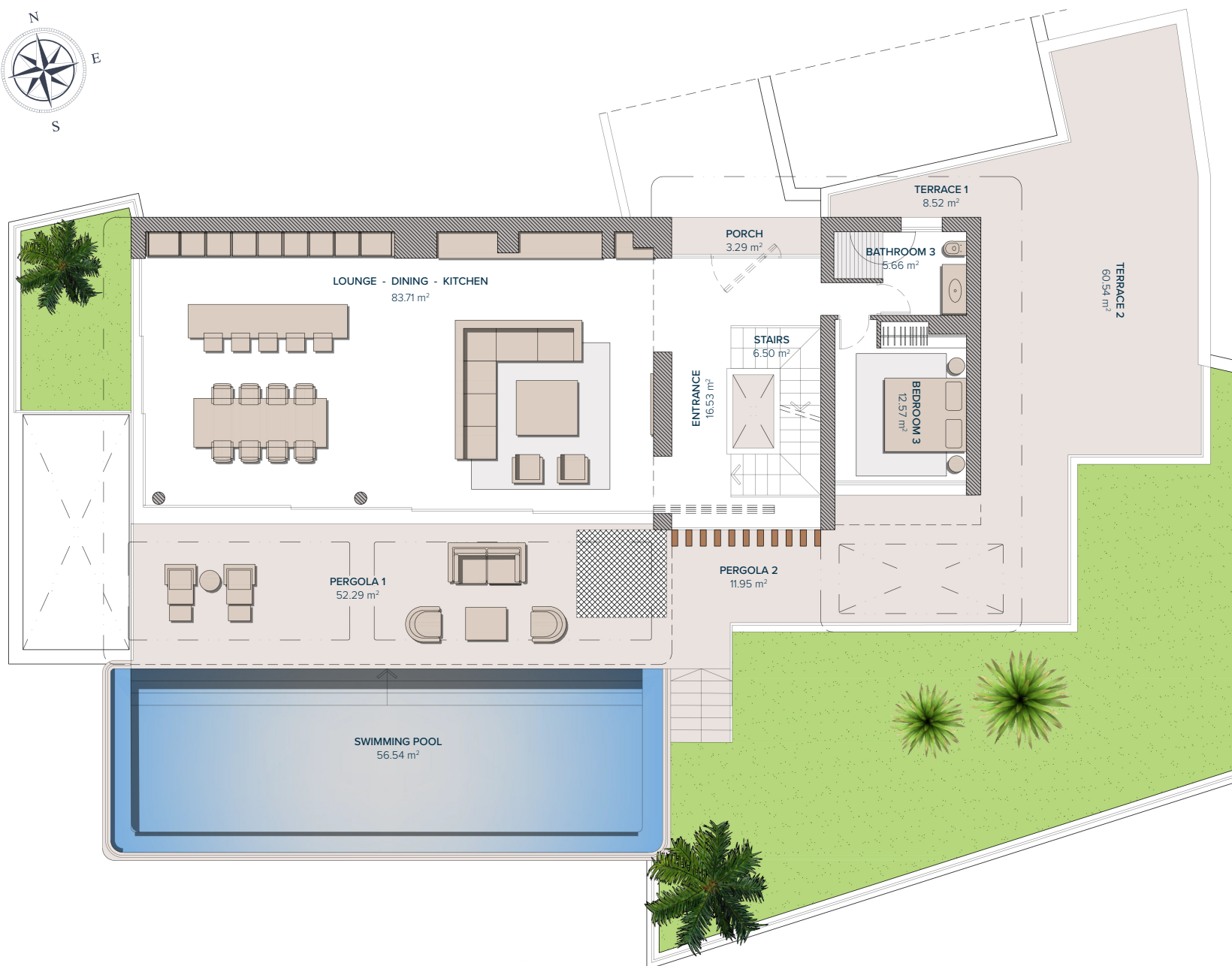


Entrance

1
0
-1

These images are not contractual but only for illustrative purposes. The images are subject to technical, legal or commercial modifications approved by the project management or the competent authority. The 3D images corresponding to the facades, common elements, and the rest of the spaces are merely indicative and will be subject to verification or Modification in the technical projects. The furniture of the 3D images is not included and the equipment of the villas will be indicated in the corresponding building and quality specifications. The energy certification corresponds with the one established in the project in process. All the information and documentation will be provided according to the terms established in the Royal Decree 515/1989 and in the rest of the autonomous or state regulations currently in force that could complement the Mentioned Decree.





Entrance

1
0
-1

## VILLA Nº10

### GROUND FLOOR

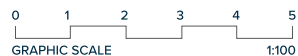
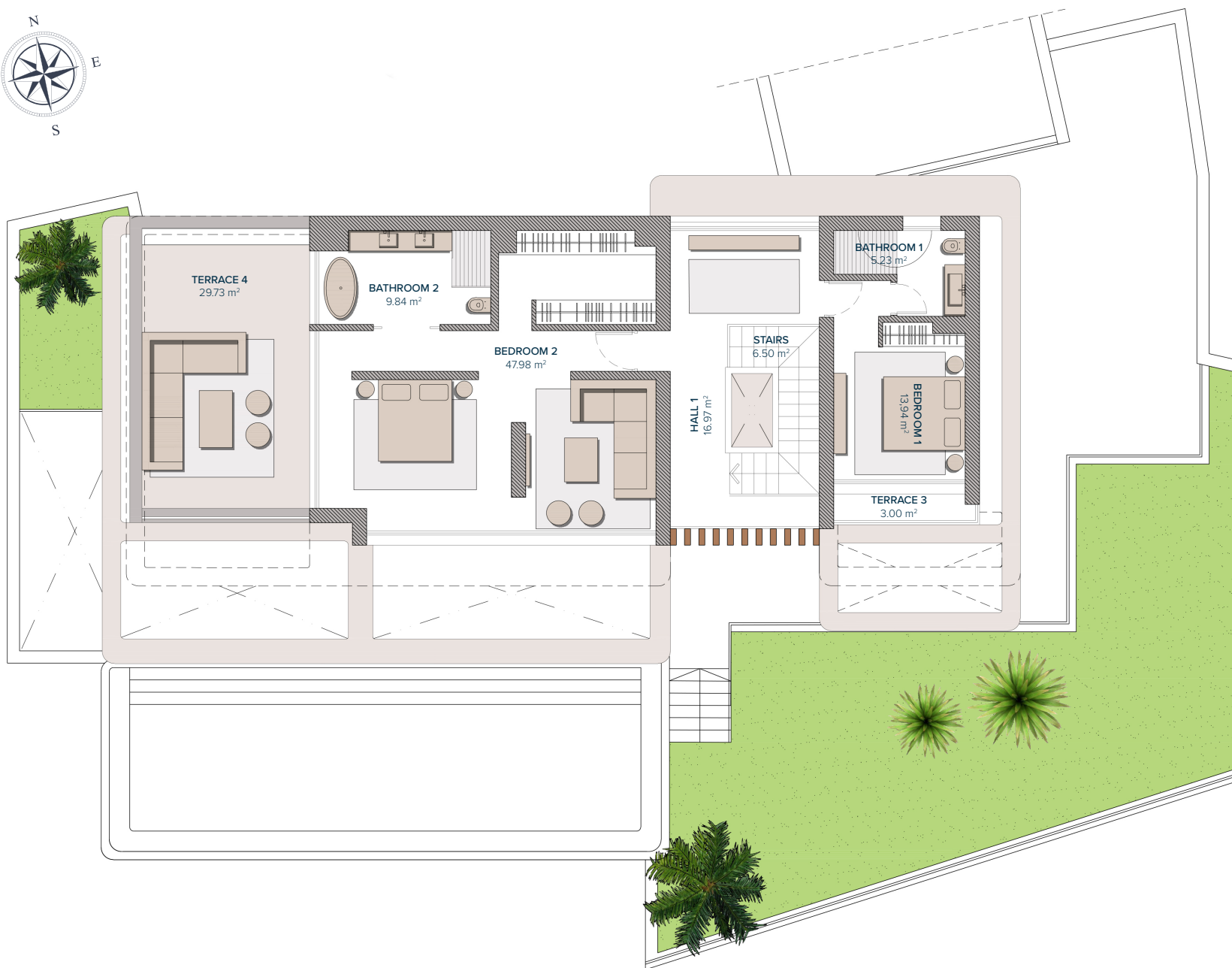
#### ENTRANCE & LIVING AREA

ENTRANCE	16,53 m <sup>2</sup>
STAIRS	6,50 m <sup>2</sup>
LOUNGE-DINING-KITCHEN	83,71 m <sup>2</sup>
BATHROOM 3	5,66 m <sup>2</sup>
BEDROOM 3	12,57 m <sup>2</sup>
<b>TOTAL</b>	<b>124.97 m<sup>2</sup></b>

PORCHE ENTRANCE	3,29 m <sup>2</sup>
TERRACE 1	8,52 m <sup>2</sup>
TERRACE 2	60,54 m <sup>2</sup>
PERGOLA 1	52,29 m <sup>2</sup>
PERGOLA 2	11,95 m <sup>2</sup>
<b>TOTAL</b>	<b>136,59 m<sup>2</sup></b>

These images are not contractual but only for illustrative purposes. The images are subject to technical, legal or commercial modifications approved by the project management or the competent authority. The 3D images corresponding to the facades, common elements, and the rest of the spaces are merely indicative and will be subject to verification or Modification in the technical projects. The furniture of the 3D images is not included and the equipment of the villas will be indicated in the corresponding building and quality specifications. The energy certification corresponds with the one established in the project in process. All the information and documentation will be provided according to the terms established in the Royal Decree 515/1989 and in the rest of the autonomous or state regulations currently in force that could complement the Mentioned Decree.





Entrance

1
0
-1

## VILLA N°10 FIRST FLOOR

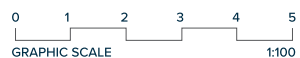
### BEDROOMS

HALL 1	16,97 m <sup>2</sup>
STAIRS	6,50 m <sup>2</sup>
BATHROOM 1	5,23 m <sup>2</sup>
BEDROOM 1	13,94 m <sup>2</sup>
BATHROOM 2	9,84 m <sup>2</sup>
BEDROOM 2	47,98 m <sup>2</sup>
<b>TOTAL</b>	<b>100,46 m<sup>2</sup></b>

### TERRACES

TERRACE 3	3,00 m <sup>2</sup>
TERRACE 4	29,73 m <sup>2</sup>
<b>TOTAL</b>	<b>32,73 m<sup>2</sup></b>

These images are not contractual but only for illustrative purposes. The images are subject to technical, legal or commercial modifications approved by the project management or the competent authority. The 3D images corresponding to the facades, common elements, and the rest of the spaces are merely indicative and will be subject to verification or Modification in the technical projects. The furniture of the 3D images is not included and the equipment of the villas will be indicated in the corresponding building and quality specifications. The energy certification corresponds with the one established in the project in process. All the information and documentation will be provided according to the terms established in the Royal Decree 515/1989 and in the rest of the autonomous or state regulations currently in force that could complement the Mentioned Decree.



Entrance

1
0
-1

## VILLA Nº10

### BASEMENT

#### BASEMENT

HALL 2	27 m <sup>2</sup>
STAIRS	4,24 m <sup>2</sup>
PATIO	1,80 m <sup>2</sup>
PATIO 1	4,73 m <sup>2</sup>
PATIO 2	15,69 m <sup>2</sup>
AREA 1	81,97 m <sup>2</sup>
AREA 2	14,18 m <sup>2</sup>
AREA 3	4,71 m <sup>2</sup>
AREA 4	4,98 m <sup>2</sup>
AREA 5	18,68 m <sup>2</sup>
HALL 3	3,11 m <sup>2</sup>
PARKING	62,36 m <sup>2</sup>
POOL MACHINE ROOM	11,24 m <sup>2</sup>
MACHINERY ROOM	13,75 m <sup>2</sup>
<b>TOTAL</b>	<b>268,44 m<sup>2</sup></b>

These images are not contractual but only for illustrative purposes. The images are subject to technical, legal or commercial modifications approved by the project management or the competent authority. The 3D images corresponding to the facades, common elements, and the rest of the spaces are merely indicative and will be subject to verification or Modification in the technical projects. The furniture of the 3D images is not included and the equipment of the villas will be indicated in the corresponding building and quality specifications. The energy certification corresponds with the one established in the project in process. All the information and documentation will be provided according to the terms established in the Royal Decree 515/1989 and in the rest of the autonomous or state regulations currently in force that could complement the Mentioned Decree.



## VILLA Nº17

### GROUND FLOOR

#### LIVING AREA

HALL	16,55 m <sup>2</sup>
STAIRS	6,50 m <sup>2</sup>
LOUNGE- DINING-KITCHEN	83,39 m <sup>2</sup>
BATHROOM 3	5,65 m <sup>2</sup>
BEDROOM 3	12,58 m <sup>2</sup>
<b>TOTAL</b>	<b>124,67 m<sup>2</sup></b>

#### PERGOLAS & TERRACES

PORCH ACCESS	3,29 m <sup>2</sup>
PARKING (PERGOLA)	39,01 m <sup>2</sup>
TERRACE 1	8,52 m <sup>2</sup>
PERGOLA 1	52,29 m <sup>2</sup>
PERGOLA 2	11,51 m <sup>2</sup>
<b>TOTAL</b>	<b>114,62 m<sup>2</sup></b>

Entrance

1
0
-1

0 1 2 3 4 5  
GRAPHIC SCALE 1:100

These images are not contractual but only for illustrative purposes. The images are subject to technical, legal or commercial modifications approved by the project management or the competent authority. The 3D images corresponding to the facades, common elements, and the rest of the spaces are merely indicative and will be subject to verification or Modification in the technical projects. The furniture of the 3D images is not included and the equipment of the villas will be indicated in the corresponding building and quality specifications. The energy certification corresponds with the one established in the project in process. All the information and documentation will be provided according to the terms established in the Royal Decree 515/1989 and in the rest of the autonomous or state regulations currently in force that could complement the Mentioned Decree.





## VILLA N°17

### FIRST FLOOR

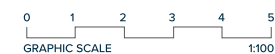
#### BEDROOMS

HALL 1	16,97 m <sup>2</sup>
STAIRS	6,50 m <sup>2</sup>
BATHROOM 1	5,23 m <sup>2</sup>
BEDROOM 1	13,94 m <sup>2</sup>
BATHROOM 2	9,84 m <sup>2</sup>
BEDROOM 2	47,98 m <sup>2</sup>
<b>TOTAL</b>	<b>100,46 m<sup>2</sup></b>

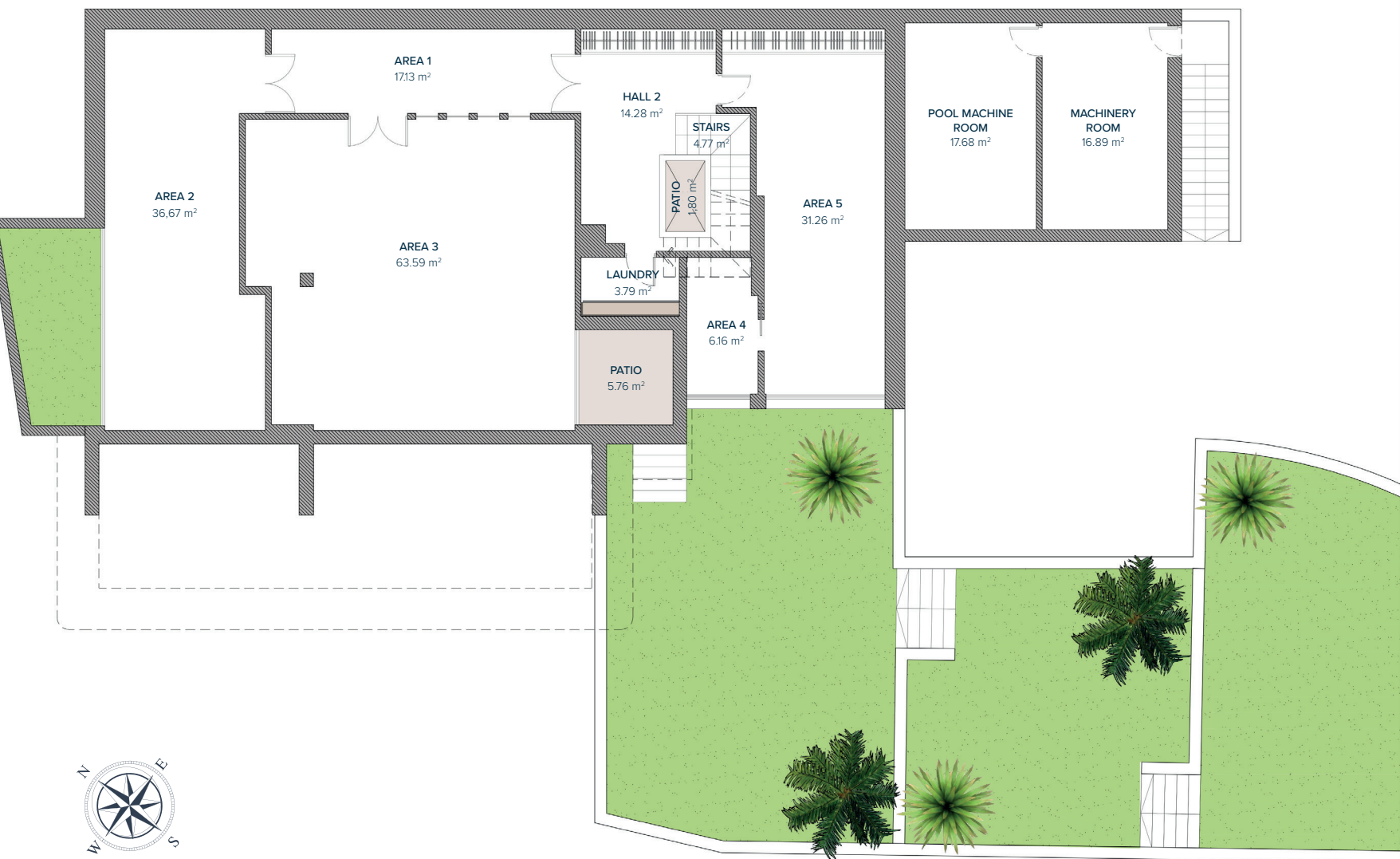
#### PERGOLAS & TERRACES

TERRACE 2	3,00 m <sup>2</sup>
TERRACE 3	29,73 m <sup>2</sup>
<b>TOTAL</b>	<b>32,73 m<sup>2</sup></b>

Entrance	1
	0
	-1

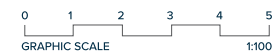


These images are not contractual but only for illustrative purposes. The images are subject to technical, legal or commercial modifications approved by the project management or the competent authority. The 3D images corresponding to the facades, common elements, and the rest of the spaces are merely indicative and will be subject to verification or Modification in the technical projects. The furniture of the 3D images is not included and the equipment of the villas will be indicated in the corresponding building and quality specifications. The energy certification corresponds with the one established in the project in process. All the information and documentation will be provided according to the terms established in the Royal Decree 515/1989 and in the rest of the autonomous or state regulations currently in force that could complement the Mentioned Decree.



Entrance

1
0
-1



## VILLA Nº17

### BASEMENT

HALL 2	14,28 m <sup>2</sup>
AREA 1	17,13 m <sup>2</sup>
AREA 2	36,67 m <sup>2</sup>
AREA 3	63,59 m <sup>2</sup>
AREA 4	6,16 m <sup>2</sup>
AREA 5	31,26 m <sup>2</sup>
LAUNDRY	3,79 m <sup>2</sup>
POOL MACHINE ROOM	17,68 m <sup>2</sup>
MACHINERY ROOM	16,89 m <sup>2</sup>
STAIRS	4,77 m <sup>2</sup>
PATIO	1,80 m <sup>2</sup>
<b>TOTAL</b>	<b>214,02 m<sup>2</sup></b>

These images are not contractual but only for illustrative purposes. The images are subject to technical, legal or commercial modifications approved by the project management or the competent authority. The 3D images corresponding to the facades, common elements, and the rest of the spaces are merely indicative and will be subject to verification or Modification in the technical projects. The furniture of the 3D images is not included and the equipment of the villas will be indicated in the corresponding building and quality specifications. The energy certification corresponds with the one established in the project in process. All the information and documentation will be provided according to the terms established in the Royal Decree 515/1989 and in the rest of the autonomous or state regulations currently in force that could complement the Mentioned Decree.