




This document is for information only. The areas and measurements are approximate and may be modified for technical reasons and/or administrative issues. The room areas marked on the drawing are usable space.


Villa Cipres

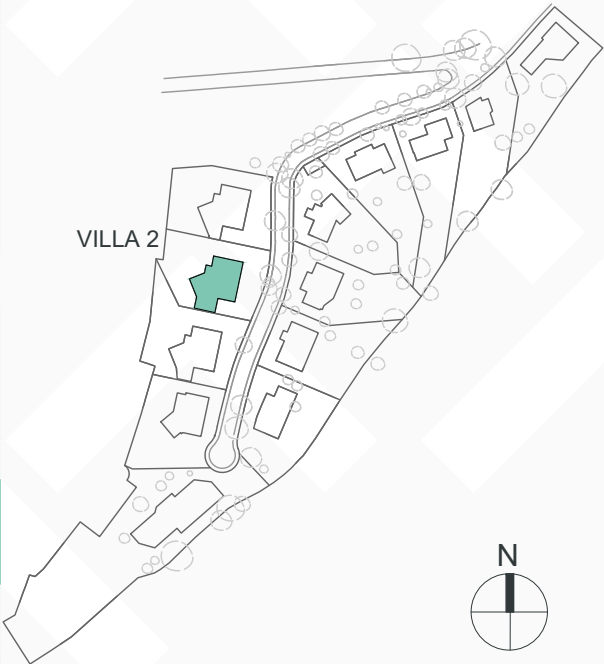
Built closed area	341 m²
Covered terrace	34 m²
Open terrace	207 m²
Open terrace pergola	31 m²
Total terrace	272 m²
Pool 9,8 x 3,8m	37 m²
Total built area	650 m²
Plot area	916 m²

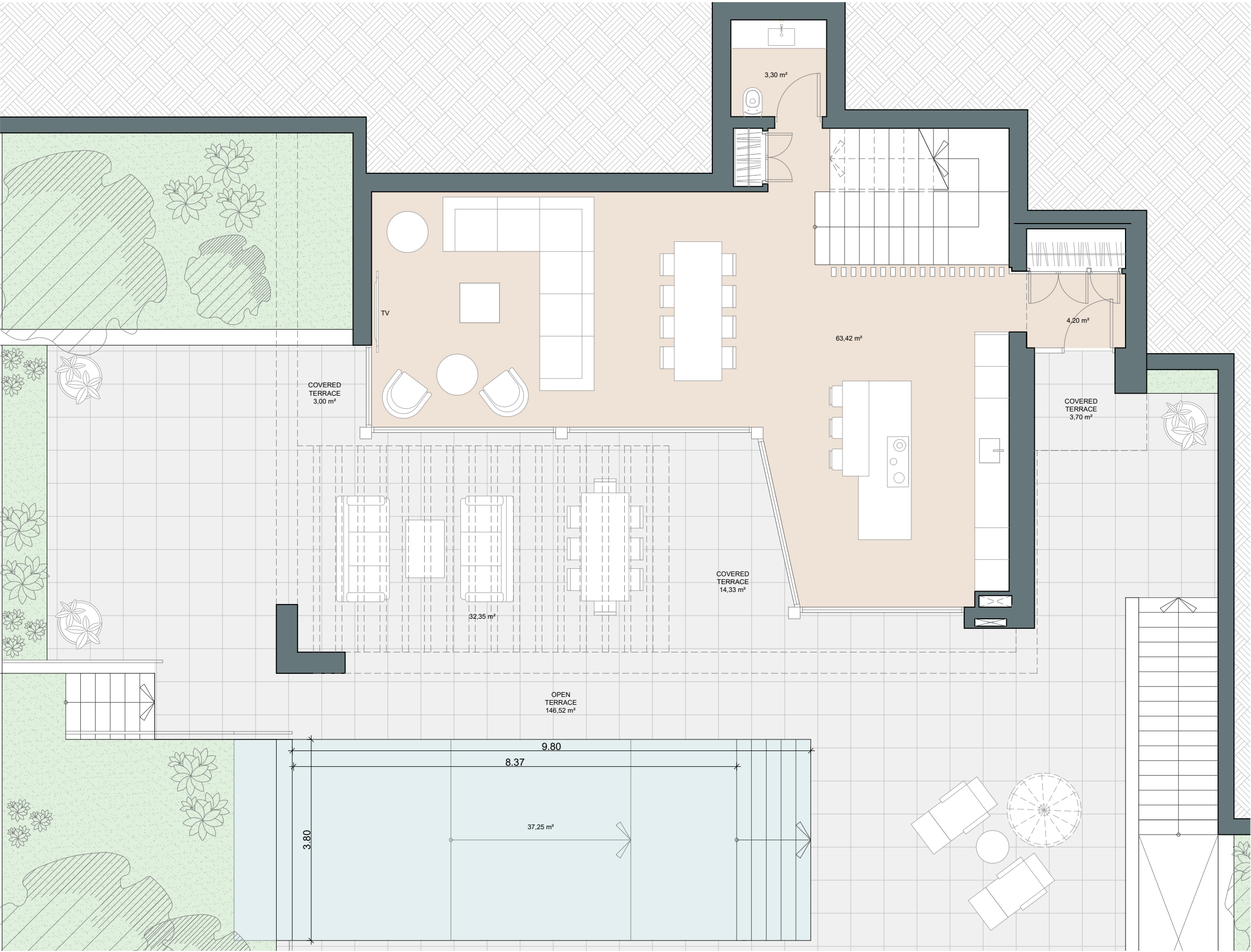

4


3


341 m²



3








Villa Cipres

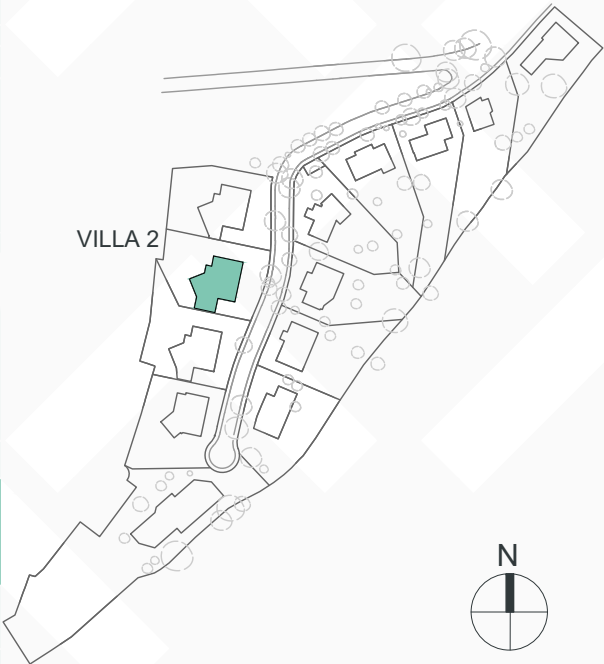
Built closed area	341 m ²
Covered terrace	34 m ²
Open terrace	207 m ²
Open terrace pergola	31 m ²
Total terrace	272 m ²
Pool 9,8 x 3,8m	37 m ²
Total built area	650 m ²
Plot area	916 m ²

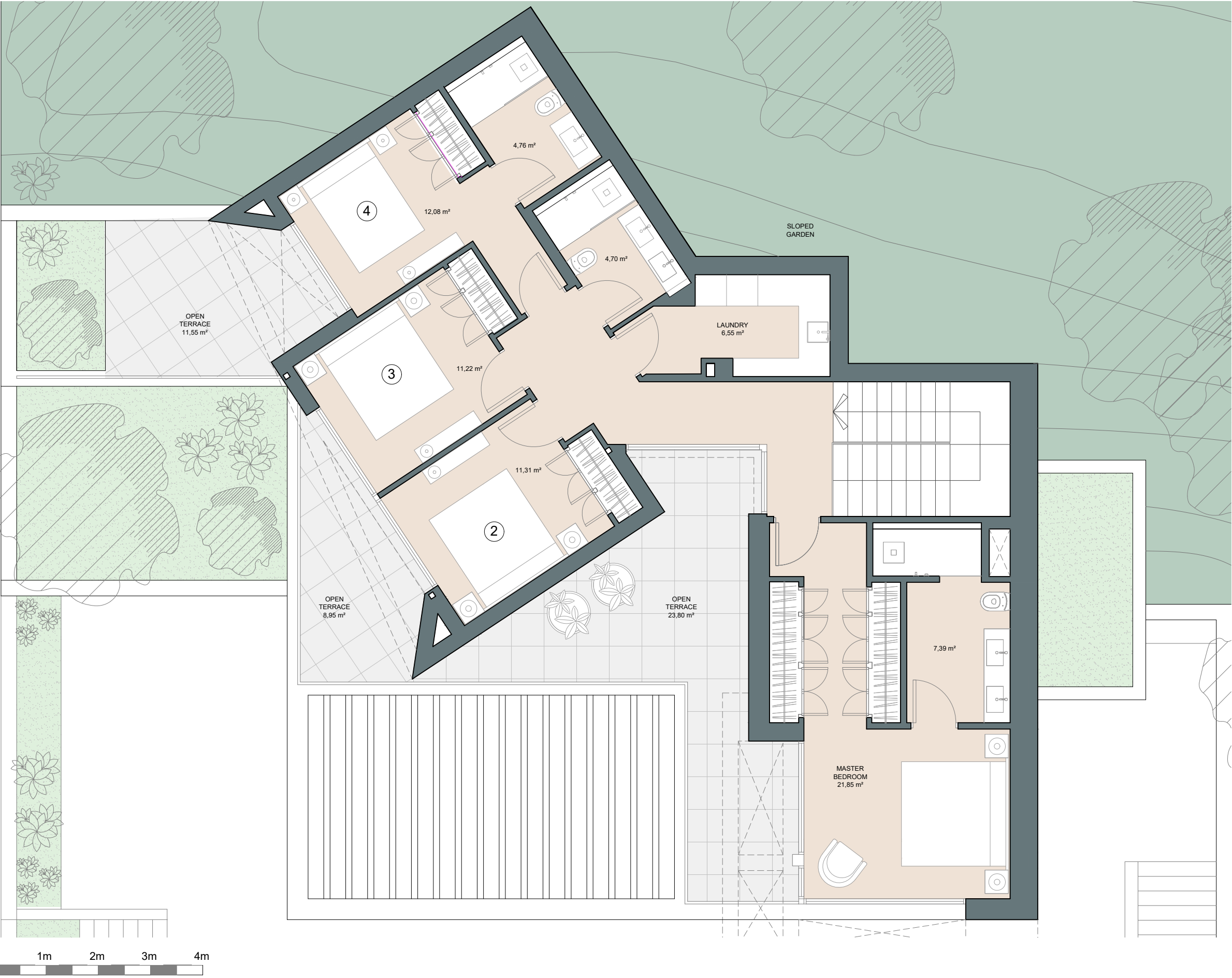

4


3


341 m²


3








This document is for information only. The areas and measurements are approximate and may be modified for technical reasons and/or administrative issues. The room areas marked on the drawing are usable space.


Villa Cipres

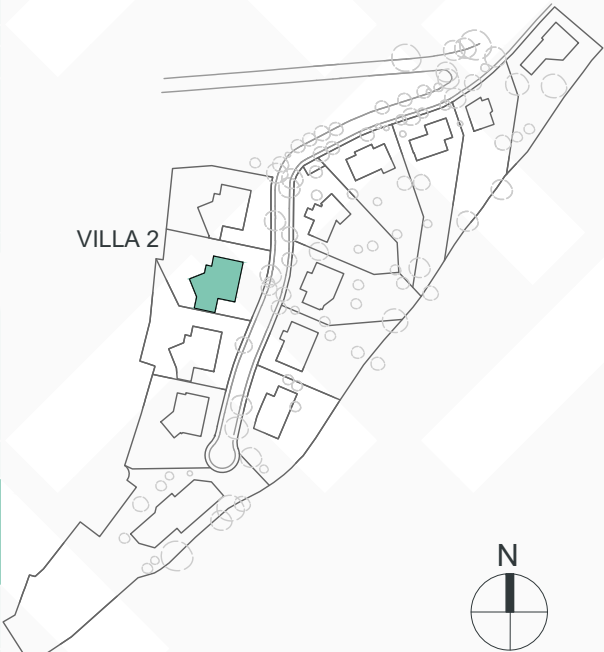
Built closed area	341 m²
Covered terrace	34 m²
Open terrace	207 m²
Open terrace pergola	31 m²
Total terrace	272 m²
Pool 9,8 x 3,8m	37 m²
Total built area	650 m²
Plot area	916 m²

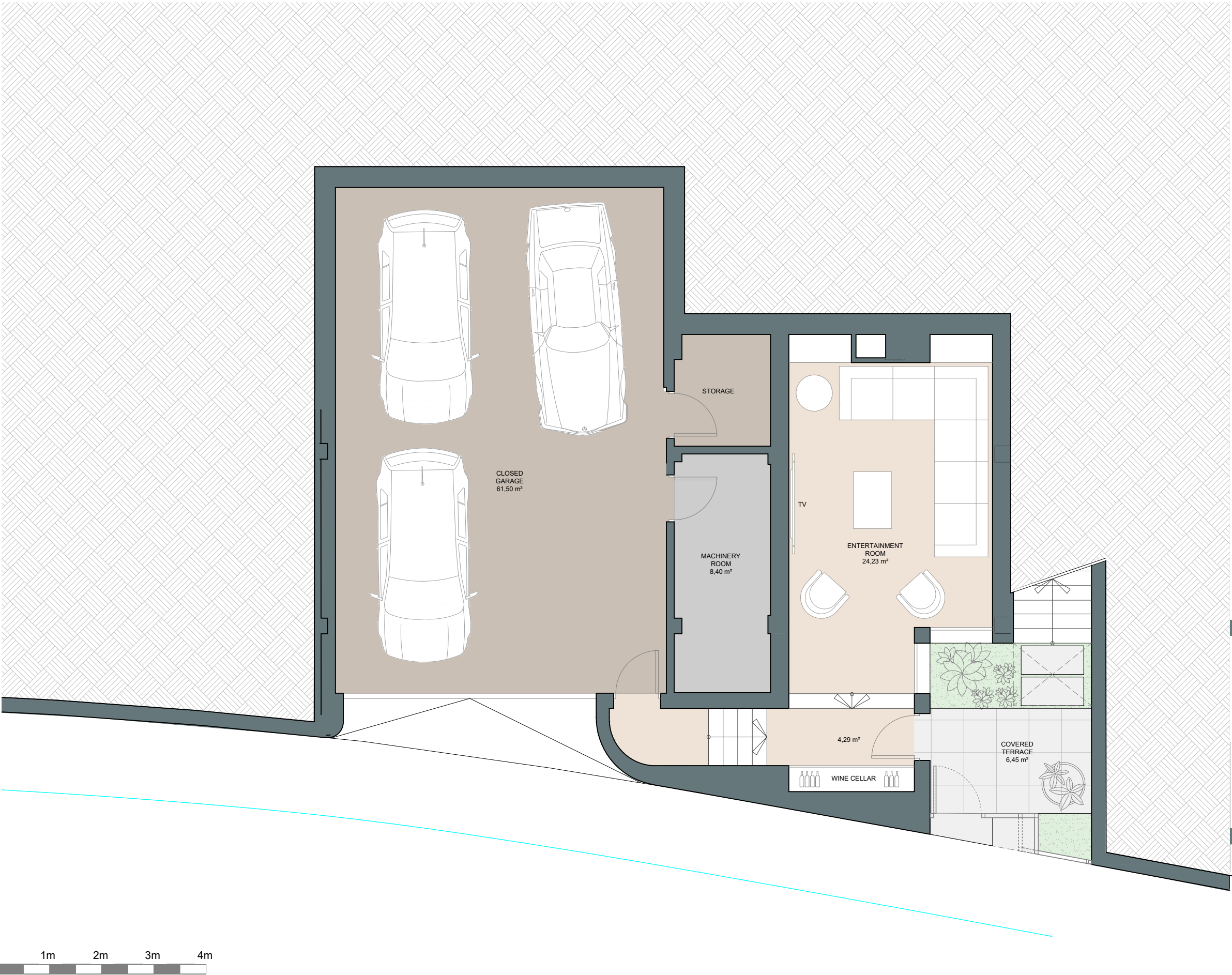

4


3


341 m²


3








This document is for information only. The areas and measurements are approximate and may be modified for technical reasons and/or administrative issues. The room areas marked on the drawing are usable space.


Villa 3

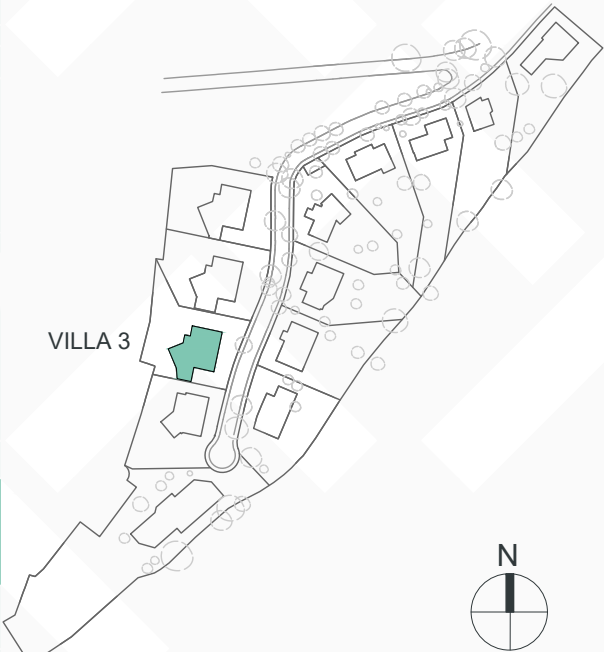
Built closed area	348 m²
Covered terrace	25 m²
Open terrace	186 m²
Open terrace pergola	31 m²
Total terrace	242 m²
Pool 9,35 x 3m	28 m²
Total built area	618 m²
Plot area	920 m²

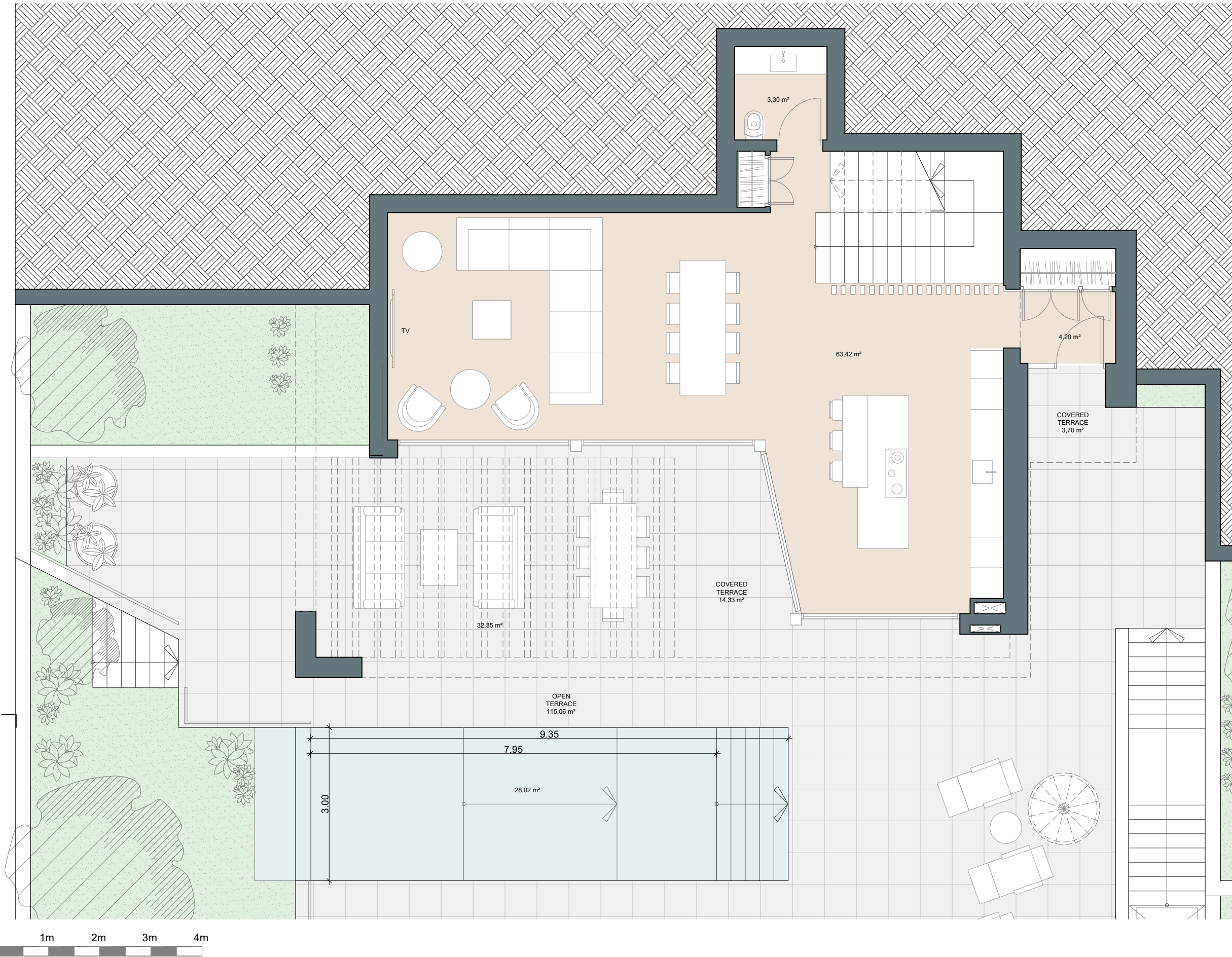

4


3


348 m²



3








Villa 3

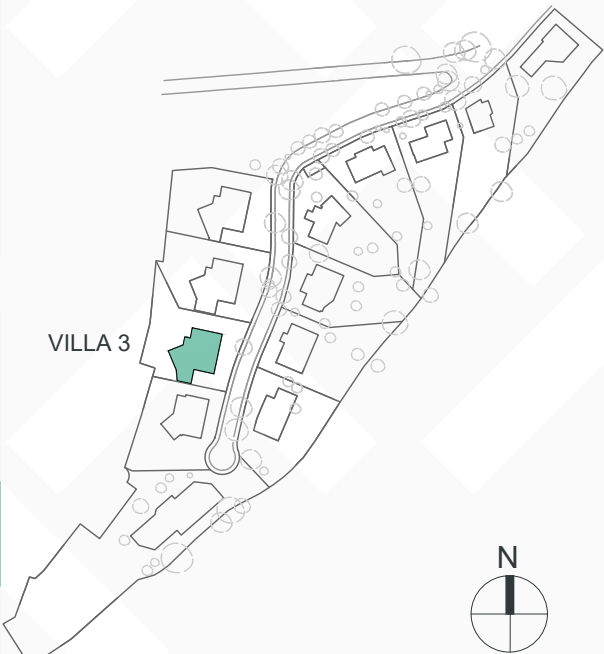
Built closed area	348 m ²
Covered terrace	25 m ²
Open terrace	186 m ²
Open terrace pergola	31 m ²
Total terrace	242 m ²
Pool 9,35 x 3m	28 m ²
Total built area	618 m²
Plot area	920 m²

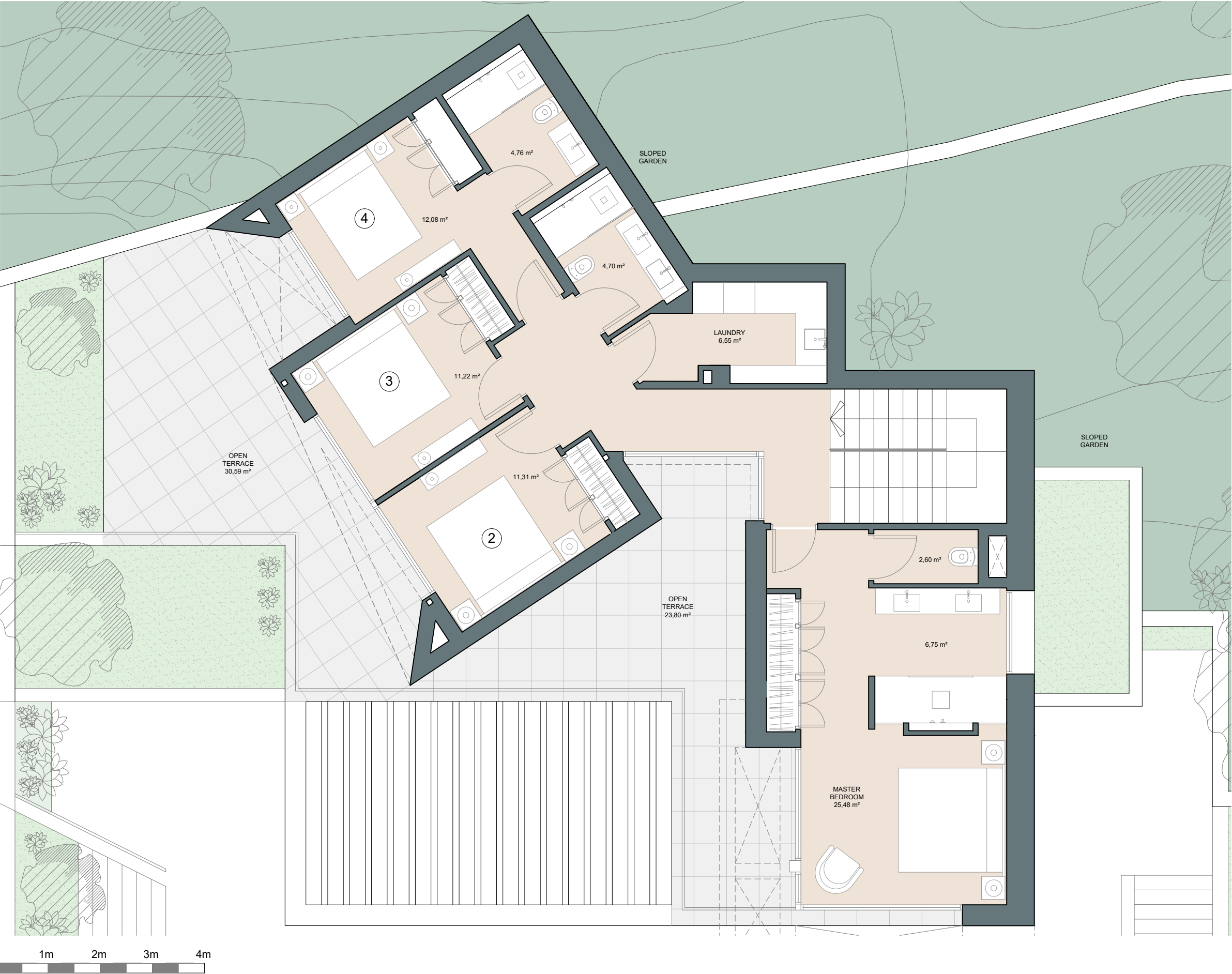

4


3


348 m²



3








Villa 3

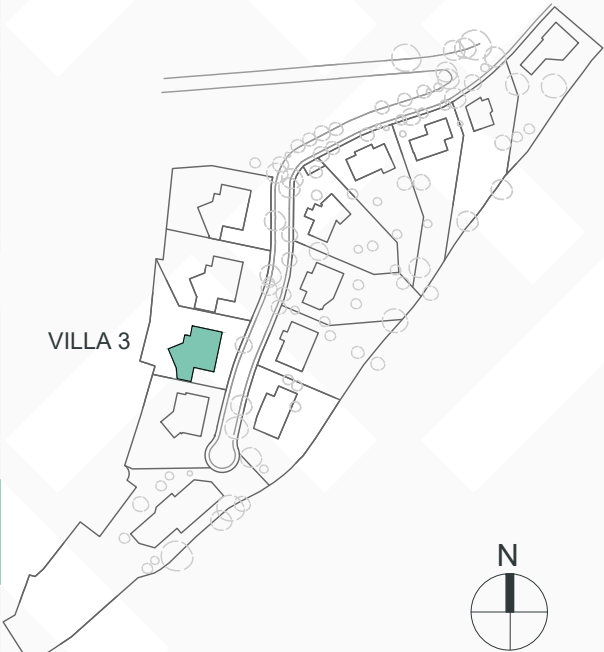
Built closed area	348 m ²
Covered terrace	25 m ²
Open terrace	186 m ²
Open terrace pergola	31 m ²
Total terrace	242 m ²
Pool 9,35 x 3m	28 m ²
Total built area	618 m ²
Plot area	920 m ²

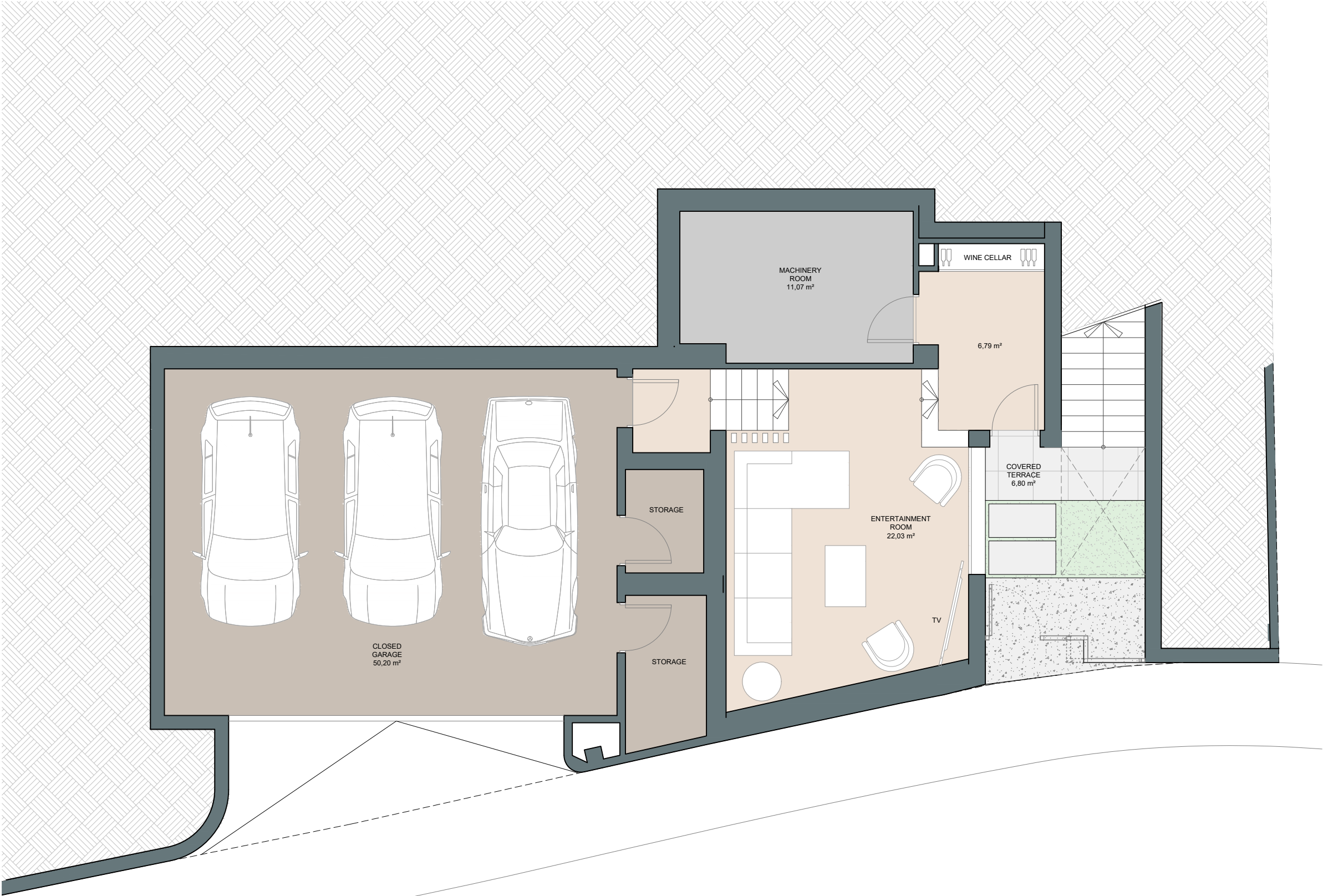

4


3


348 m²



3








Villa Olivo

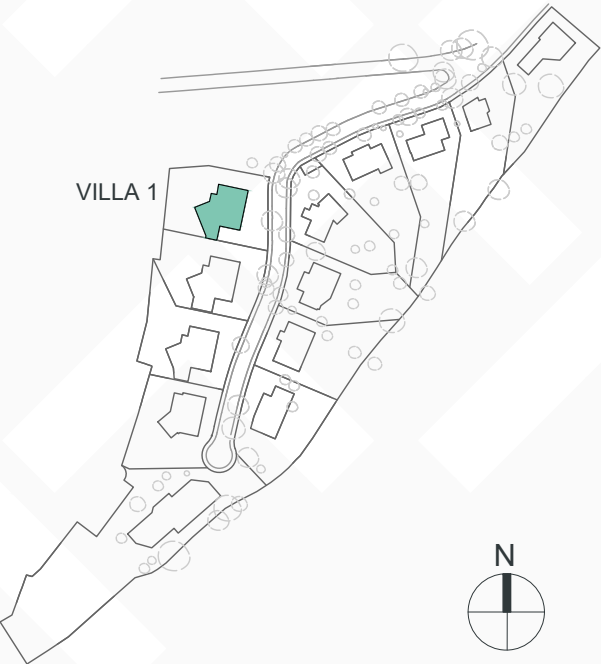
Built closed area	341 m ²
Covered terrace	26 m ²
Open terrace	218 m ²
Open terrace pergola	31 m ²
Total terrace	275 m ²
Pool 9,8 x 3,8m	37 m ²
Total built area	653 m²
Plot area	914 m²

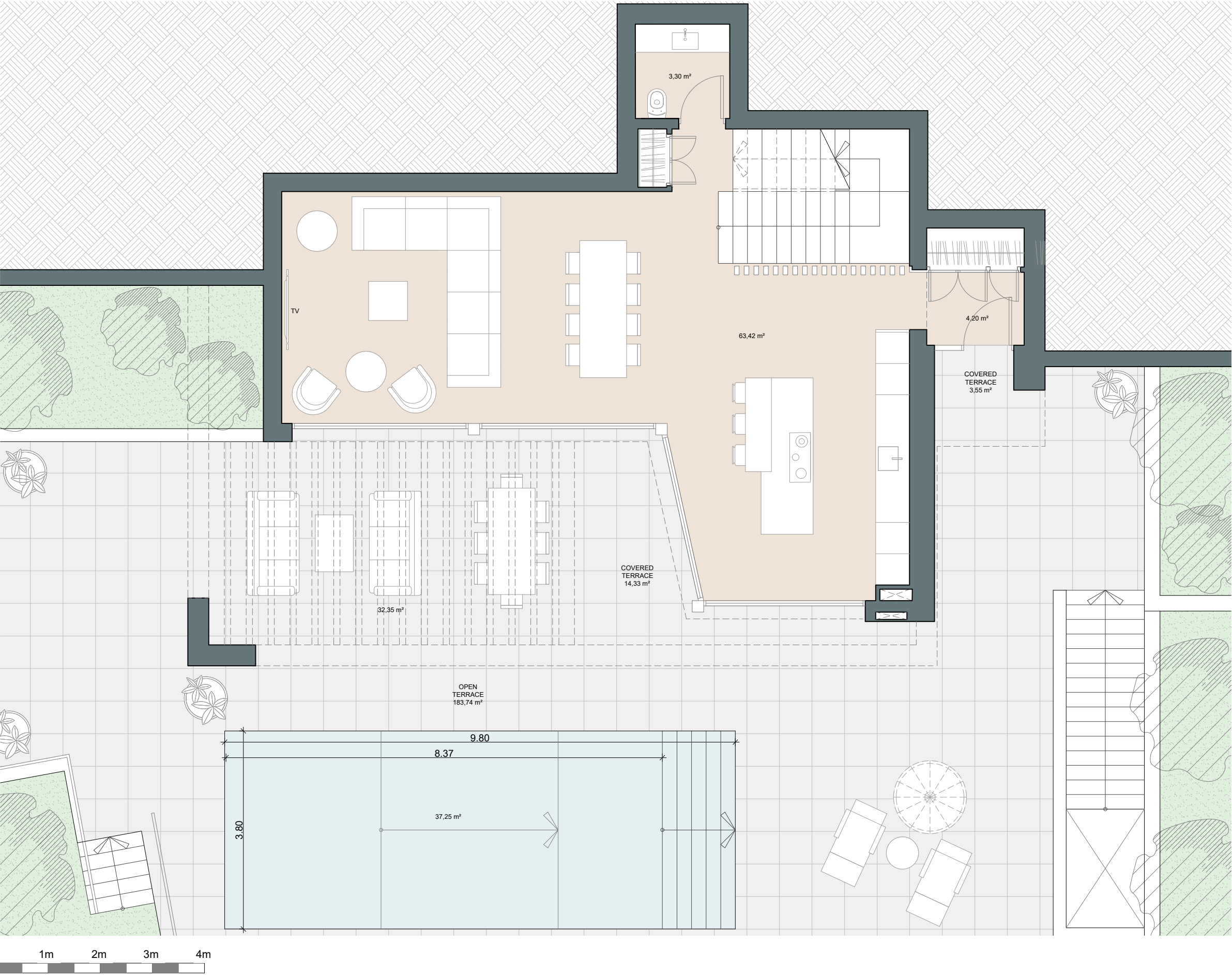

4


3


341 m²



3








Villa Olivo

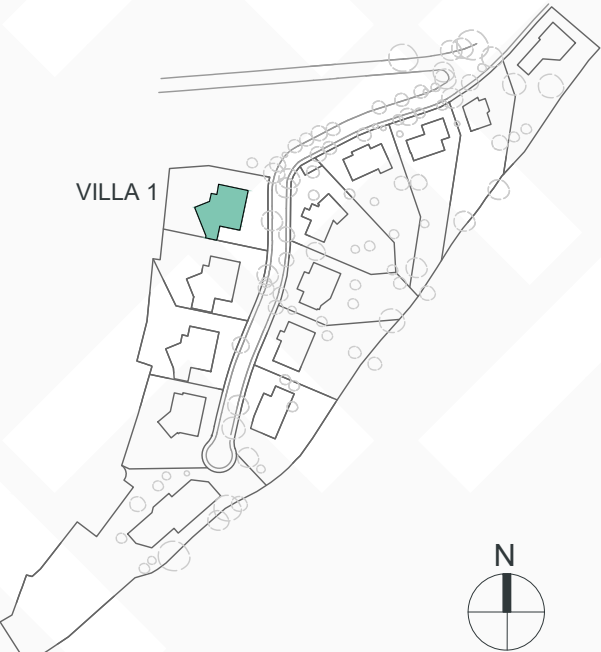
Built closed area	341 m²
Covered terrace	26 m²
Open terrace	218 m²
Open terrace pergola	31 m²
Total terrace	275 m²
Pool 9,8 x 3,8m	37 m²
Total built area	653 m²
Plot area	914 m²

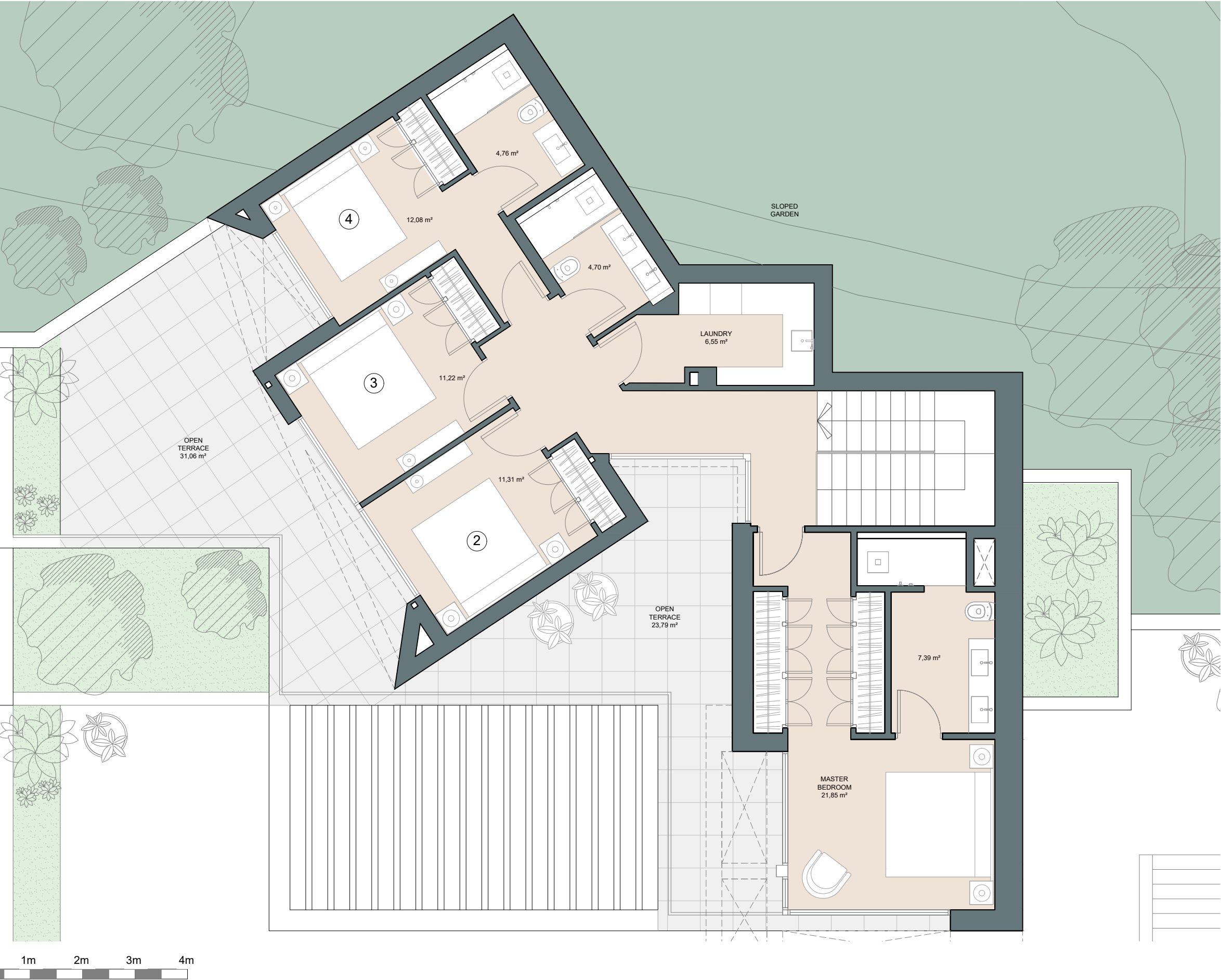

4


3


341 m²


3








This document is for information only. The areas and measurements are approximate and may be modified for technical reasons and/or administrative issues. The room areas marked on the drawing are usable space.


Villa Olivo

Built closed area	341 m²
Covered terrace	26 m²
Open terrace	218 m²
Open terrace pergola	31 m²
Total terrace	275 m²
Pool 9,8 x 3,8m	37 m²
Total built area	653 m²
Plot area	914 m²


4


3


341 m²


3

